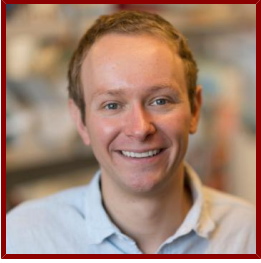


# Stanford

---



## Graham Erwin

Postdoctoral Research Fellow, Genetics

### Bio

---

#### BIO

Molecular, chemical, and genome biologist elucidating the functional role of repetitive DNA sequences. This work will guide the design of a new class of therapeutics and diagnostics for human disease.

#### PROFESSIONAL EDUCATION

- Bachelor of Science, Indiana University (2010)
- Doctor of Philosophy, University of Wisconsin Madison (2016)

#### STANFORD ADVISORS

- Michael Snyder, Postdoctoral Faculty Sponsor