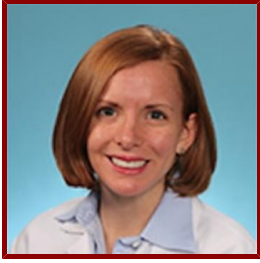


# Stanford

---



## Katherine Steffen

Clinical Assistant Professor, Pediatrics - Critical Care

 Curriculum Vitae available Online

### CLINICAL OFFICES

- **Pediatric Intensive Care**

725 Welch Rd 2 East

PCU 420

Palo Alto, CA 94304

**Tel** (650) 497-8850

**Fax** (650) 736-9186

### ACADEMIC CONTACT INFORMATION

- **Administrative Contact**

Tanida Plamintr McHatton - Administrative Associate

**Email** tanida@stanford.edu

**Tel** 650-498-6313

## Bio

---

### CLINICAL FOCUS

- Pediatric Critical Care Medicine

### ACADEMIC APPOINTMENTS

- Clinical Assistant Professor, Pediatrics - Critical Care
- Member, Maternal & Child Health Research Institute (MCHRI)

### ADMINISTRATIVE APPOINTMENTS

- Physician lead for PICU Local Improvement Team, LPCH, (2016- present)

### PROFESSIONAL EDUCATION

- Board Certification: Pediatric Critical Care Medicine, American Board of Pediatrics (2014)
- Board Certification: Pediatrics, American Board of Pediatrics (2011)
- MD, University of Iowa School of Medicine, Iowa City, IA (2008)
- Residency, Johns Hopkins University - Harriet Lane Pediatric Residency Program, Baltimore, MD , Pediatrics (2011)
- Fellowship, Johns Hopkins University - Fellowship in Pediatric Critical Care Medicine , Pediatric Critical Care (2014)

## Research & Scholarship

---

### CURRENT RESEARCH AND SCHOLARLY INTERESTS

My research interests focus on using dissemination and implementation science tools to study and enhance care provided to patients in the pediatric ICU. I have a background in human factors research and in implementation science and am also interested in clinical effectiveness and outcomes in the PICU.

## Publications

### PUBLICATIONS

- **ULTRASOUND-GUIDED IV PROGRAM IMPROVES FIRST STICK SUCCESS AND LONGEVITY IN CRITICALLY ILL CHILDREN**  
Bhargava, V., Su, E., Haileselassie, B., Davis, D., Steffen, K.  
LIPPINCOTT WILLIAMS & WILKINS.2020
- **Pediatric Transport Triage: Development and Assessment of an Objective Tool to Guide Transport Planning.** *Pediatric emergency care*  
Steffen, K. M., Noje, C., Costabile, P. M., Henderson, E., Hunt, E. A., Klein, B. L., McMillan, K. N.  
2020; 36 (5): 240–47
- **Ultrasound-Targeted Lung Recruitment: Process Improvement for Ventilating the Critically Ill Child** *PEDIATRIC CRITICAL CARE MEDICINE*  
Su, E., Steffen, K. M.  
2019; 20 (5): 493–94
- **Development of a Structured Outcomes Assessment and Implementation Program in the Pediatric Intensive Care Unit** *AMERICAN JOURNAL OF MEDICAL QUALITY*  
Steffen, K. M., Lin, J. C., Malone, S., Doctor, A., Hartman, M. E.  
2019; 34 (1): 23–29
- **LEVERAGING AGGREGATE DATA AT THE POINT OF CARE REDUCES VARIATION FOR PEDIATRIC NEUROSURGERY PATIENTS**  
Steffen, K., Su, F., Algaze, C., Duethman, L., Jacobs, K., Casazza, M., Chantra, J., Loh, L., Shin, A., Grant, G.  
LIPPINCOTT WILLIAMS & WILKINS.2019
- **Use of Telemedicine During Interhospital Transport of Children With Operative Intracranial Hemorrhage\*** *PEDIATRIC CRITICAL CARE MEDICINE*  
Jackson, E. M., Costabile, P. M., Tekes, A., Steffen, K. M., Ahn, E. S., Scafidi, S., Noje, C.  
2018; 19 (11): 1033–38
- **Implementation of the Recommendations for RBC Transfusions for Critically Ill Children From the Pediatric Critical Care Transfusion and Anemia Expertise Initiative.** *Pediatric critical care medicine : a journal of the Society of Critical Care Medicine and the World Federation of Pediatric Intensive and Critical Care Societies*  
Steffen, K. M., Bateman, S. T., Valentine, S. L., Small, S., Spinella, P. C., Doctor, A., Pediatric Critical Care Transfusion and Anemia Initiative (TAXI), i. c.  
2018; 19 (9S Suppl 1): S170–S176
- **Consensus Recommendations for RBC Transfusion Practice in Critically Ill Children From the Pediatric Critical Care Transfusion and Anemia Expertise Initiative** *PEDIATRIC CRITICAL CARE MEDICINE*  
Valentine, S. L., Bembea, M. M., Muszynski, J. A., Cholette, J. M., Doctor, A., Spinella, P. C., Steiner, M. E., Tucci, M., Hassan, N. E., Parker, R. I., Lacroix, J., Argent, A., Carson, et al  
2018; 19 (9): 884–98
- **Development of a Structured Outcomes Assessment and Implementation Program in the Pediatric Intensive Care Unit.** *American journal of medical quality : the official journal of the American College of Medical Quality*  
Steffen, K. M., Lin, J. C., Malone, S., Doctor, A., Hartman, M. E.  
2018: 1062860618788173
- **Tele-Pediatric Intensive Care for Critically Ill Children in Syria** *TELEMEDICINE AND E-HEALTH*  
Ghbeis, M., Steffen, K. M., Braunlin, E. A., Beilman, G. J., Dahman, J., Ostwani, W., Steiner, M. E.  
2017
- **RBC Distribution Width: Biomarker for Red Cell Dysfunction and Critical Illness Outcome?** *PEDIATRIC CRITICAL CARE MEDICINE*  
Said, A. S., Spinella, P. C., Hartman, M. E., Steffen, K. M., Jackups, R., Holubkov, R., Wallendorf, M., Doctor, A.  
2017; 18 (2): 134-142
- **Controlling Phlebotomy Volume Diminishes PICU Transfusion: Implementation Processes and Impact.** *Pediatrics*  
Steffen, K., Doctor, A., Hoerr, J., Gill, J., Markham, C., Brown, S. M., Cohen, D., Hansen, R., Kryzer, E., Richards, J., Small, S., Valentine, S., York, et al  
2017; 140 (2)
- **Determination of Genetic Predisposition to Patent Ductus Arteriosus in Preterm Infants** *PEDIATRICS*

Dagle, J. M., Lepp, N. T., Cooper, M. E., Schaa, K. L., Kelsey, K. J., Orr, K. L., Caprau, D., Zimmerman, C. R., Steffen, K. M., Johnson, K. J., Marazita, M. L., Murray, J. C.  
2009; 123 (4): 1116-1123

- **Evaluation of fetal and maternal genetic variation in the progesterone receptor gene for contributions to preterm birth** *PEDIATRIC RESEARCH*  
Ehn, N. L., Cooper, M. E., Orr, K., Shi, M., Johnson, M. K., Caprau, D., Dagle, J., Steffen, K., Johnson, K., Marazita, M. L., Merrill, D., Murray, J. C.  
2007; 62 (5): 630-635
- **Maternal and fetal variation in genes of cholesterol metabolism is associated with preterm delivery** *JOURNAL OF PERINATOLOGY*  
Steffen, K. M., Cooper, M. E., Shi, M., Caprau, D., Simhan, H. N., Dagle, J. M., Marazita, M. L., Murray, J. C.  
2007; 27 (11): 672-680