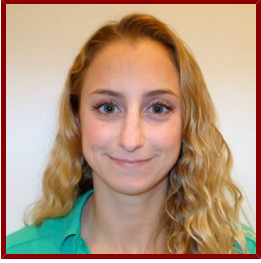


Stanford



Rebecca Wolk

Clinical Assistant Professor, Pediatrics

CLINICAL OFFICES

- **LPCH Division of Pediatric Hospital Medicine**

780 Welch Rd

MC 5776

Palo Alto, CA 94304

Tel (650) 736-4423

Fax (650) 736-6690

Bio

CLINICAL FOCUS

- Pediatrics
- Pediatric Hospital Medicine

ACADEMIC APPOINTMENTS

- Clinical Assistant Professor, Pediatrics

PROFESSIONAL EDUCATION

- Medical Education: University of Southern California Keck School of Medicine Registrar (2009) CA
- Fellowship: UCSD/Rady Children's Hospital CA
- Board Certification: Pediatrics, American Board of Pediatrics (2012)
- Residency: Children's Hospital and Research Center Oakland (2012)

Research & Scholarship

RESEARCH INTERESTS

- Professional Development
- Teachers and Teaching

CURRENT RESEARCH AND SCHOLARLY INTERESTS

My quality improvement focus is on patient safety in the community setting. My research interest is in medical education, and I am currently studying the National Nighttime Curriculum for pediatric residents and its reception by trainees and program directors over the last 7 years.

Publications

PUBLICATIONS

- **Imperative Instruction for Pressurized Metered-Dose Inhalers: Provider Perspectives** *RESPIRATORY CARE*
Schmitz, D. C., Ivancie, R. A., Rhee, K. E., Pierce, H. C., Cantu, A. O., Fisher, E. S.
2019; 64 (3): 292–98
- **Sepsis** *Caring for the Hospitalized Child: A Handbook of Inpatient Pediatrics*
Ivancie, R.
edited by Gershel, J., Rauch, D. A.
2017; 2nd: 439–446