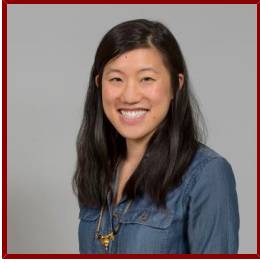


# Stanford

---



## Olivia Jee

Clinical Assistant Professor, Medicine - Primary Care and Population Health

### CLINICAL OFFICES

- **Stanford Health Center at Los Altos**

960 N San Antonio Rd Ste 101

Los Altos, CA 94022

Tel (650) 498-9000

Fax (650) 736-6353

### Bio

---

### CLINICAL FOCUS

- Family Medicine

### ACADEMIC APPOINTMENTS

- Clinical Assistant Professor, Medicine - Primary Care and Population Health

### BOARDS, ADVISORY COMMITTEES, PROFESSIONAL ORGANIZATIONS

- Diplomat, American Board of Family Medicine (2015 - present)
- Member, California American Academy of Family Physicians (2012 - present)
- Member, American Academy of Family Physicians (2012 - present)

### PROFESSIONAL EDUCATION

- Board Certification: Family Medicine, American Board of Family Medicine (2015)
- Board Certification, American Board of Family Medicine (2015)
- Residency, San Jose - O'Connor Family Medicine Residency Program (2015)
- Fellowship, University of Arizona , Program in Integrative Medicine (2015)
- Medical Education, Rosalind Franklin University of Medicine and Science , Chicago Medical School (2012)
- Bachelors of Arts, Carleton College , Chemistry (2008)

### Teaching

---

### COURSES

#### 2020-21

- Exploration of The Health Care System : Clinical Partnership Development: INDE 292 (Win, Spr)
- Student Community Outreach and Physician Support (S-CORPS): FAMMED 280 (Aut, Win, Spr, Sum)
- Walk With Me: A Patient & Family Centered Exploration of Health & The Health Care System: INDE 290B (Win)

- Walk With Me: A Patient & Family Centered Exploration of Health & The Health Care System: INDE 290C (Spr)
- Walk With Me: A Patient and Family Centered Exploration of Health & The Health Care System: INDE 290A (Aut)

#### 2019-20

- Exploration of The Health Care System : Clinical Partnership Development: INDE 292 (Win, Spr)

#### 2018-19

- A Patient & Family Centered Exploration of Health & The Health Care System Practicum: INDE 291 (Spr)
- Exploration of The Health Care System : Clinical Partnership Development: INDE 292 (Aut, Win, Spr)
- Walk With Me: A Patient & Family Centered Exploration of Health & The Health Care System: INDE 290B (Win)
- Walk With Me: A Patient & Family Centered Exploration of Health & The Health Care System: INDE 290C (Spr)
- Walk With Me: A Patient & Family Centered Exploration of Health & The Health Care System: PAS 280B (Win)
- Walk With Me: A Patient & Family Centered Exploration of Health & The Health Care System: PAS 280C (Spr)
- Walk With Me: A Patient and Family Centered Exploration of Health & The Health Care System: INDE 290A, PAS 280A (Aut)

#### 2017-18

- A Patient Centered Exploration of Health and The Health Care System Practicum: INDE 291, PAS 281 (Aut, Win, Spr)
- Exploration of The Health Care System : Clinical Partnership Development: INDE 292 (Aut, Win, Spr)
- Walk With Me: A Patient Centered Exploration of Health and The Health Care System: INDE 290B (Win)
- Walk With Me: A Patient Centered Exploration of Health and The Health Care System: INDE 290C (Spr)
- Walk With Me: A Patient Centered Exploration of Health and The Health Care System: PAS 280B (Win)
- Walk With Me: A Patient Centered Exploration of Health and The Health Care System: PAS 280C (Spr)

## Publications

---

### PUBLICATIONS

- **Qualitative Assessment of Rapid System Transformation to Primary Care Video Visits at an Academic Medical Center.** *Annals of internal medicine*  
Srinivasan, M., Asch, S., Vilendrer, S., Thomas, S. C., Bajra, R., Barman, L., Edwards, L. M., Filipowicz, H., Giang, L., Jee, O., Mahoney, M., Nelligan, I., Phadke, et al  
2020