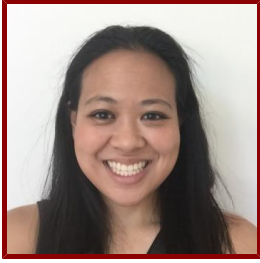


Stanford



Jennifer Kong

Postdoctoral Research Fellow, Biochemistry

Bio

HONORS AND AWARDS

- School of Medicine Dean's Postdoctoral Fellowship, Stanford University (2016-2017)
- Jump Start Award for Excellence in Research, Stanford University (2016)
- Dr. Eva Mary Kavan Prize for Excellence in Research on the Brain, UCLA Brain Research Institute (2015)
- Dissertation Year Fellowship, UCLA Graduate Division (2013-2014)
- Distinction in Teaching Award, UCLA Life Sciences (2010)
- Graduation with honors in Biology, Willamette University (2007)
- Carson Undergraduate Research Grant, Willamette University (2006)
- Philip C. Armstrong Biology Scholarship, Willamette University (2006)

PROFESSIONAL EDUCATION

- Bachelor of Arts, Willamette University (2007)
- Doctor of Philosophy, University of California Los Angeles (2015)

STANFORD ADVISORS

- Rajat Rohatgi, Postdoctoral Faculty Sponsor

Publications

PUBLICATIONS

- **Biochemical mechanisms of vertebrate hedgehog signaling** *DEVELOPMENT*
Kong, J. H., Siebold, C., Rohatgi, R.
2019; 146 (10)
- **Biochemical mechanisms of vertebrate hedgehog signaling.** *Development (Cambridge, England)*
Kong, J. H., Siebold, C., Rohatgi, R.
2019; 146 (10)
- **Olig2 and Hes regulatory dynamics during motor neuron differentiation revealed by single cell transcriptomics** *PLOS BIOLOGY*
Sagner, A., Gaber, Z. B., Delile, J., Kong, J. H., Rousso, D. L., Pearson, C. A., Weicksel, S. E., Melchionda, M., Gharavy, S., Briscoe, J., Novitch, B. G.
2018; 16 (2): e2003127
- **G protein-coupled receptors control the sensitivity of cells to the morphogen Sonic Hedgehog.** *Science signaling*
Pusapati, G. V., Kong, J. H., Patel, B. B., Gouti, M., Sagner, A., Sircar, R., Luchetti, G., Ingham, P. W., Briscoe, J., Rohatgi, R.
2018; 11 (516)

- **CRISPR Screens Uncover Genes that Regulate Target Cell Sensitivity to the Morphogen Sonic Hedgehog.** *Developmental cell*
Pusapati, G. V., Kong, J. H., Patel, B. B., Krishnan, A., Sagner, A., Kinnebrew, M., Briscoe, J., Aravind, L., Rohatgi, R.
2018; 44 (1): 113–29.e8
- **Netrin1 Produced by Neural Progenitors, Not Floor Plate Cells, Is Required for Axon Guidance in the Spinal Cord** *NEURON*
Varadarajan, S. G., Kong, J. H., Phan, K. D., Kao, T., Panaitof, S. C., Cardin, J., Eltzschig, H., Kania, A., Novitch, B. G., Butler, S. J.
2017; 94 (4): 790-?
- **Cholesterol activates the G-protein coupled receptor Smoothed to promote morphogenetic signaling.** *eLife*
Luchetti, G., Sircar, R., Kong, J. H., Nachtergaele, S., Sagner, A., Byrne, E. F., Covey, D. F., Siebold, C., Rohatgi, R.
2016; 5
- **Notch Activity Modulates the Responsiveness of Neural Progenitors to Sonic Hedgehog Signaling** *DEVELOPMENTAL CELL*
Kong, J. H., Yang, L., Dessaud, E., Chuang, K., Moore, D. M., Rohatgi, R., Briscoe, J., Novitch, B. G.
2015; 33 (4): 373-387
- **Gli protein activity is controlled by multisite phosphorylation in vertebrate hedgehog signaling.** *Cell reports*
Niewiadomski, P., Kong, J. H., Ahrends, R., Ma, Y., Humke, E. W., Khan, S., Teruel, M. N., Novitch, B. G., Rohatgi, R.
2014; 6 (1): 168-181
- **My Brain Told Me to Do It** *DEVELOPMENTAL CELL*
Kong, J. H., Butler, S. J., Novitch, B. G.
2013; 25 (5): 436-438
- **Retinoid Acid Specifies Neuronal Identity through Graded Expression of Ascl1** *CURRENT BIOLOGY*
Jacob, J., Kong, J., Moore, S., Milton, C., Sasai, N., Gonzalez-Quevedo, R., Terriente, J., Imayoshi, I., Kageyama, R., Wilkinson, D. G., Novitch, B. G., Briscoe, J.
2013; 23 (5): 412-418
- **Transcription factor Olig2 defines subpopulations of retinal progenitor cells biased toward specific cell fates** *PROCEEDINGS OF THE NATIONAL ACADEMY OF SCIENCES OF THE UNITED STATES OF AMERICA*
Hafler, B. P., Surzenko, N., Beier, K. T., Punzo, C., Trimarchi, J. M., Kong, J. H., Cepko, C. L.
2012; 109 (20): 7882-7887