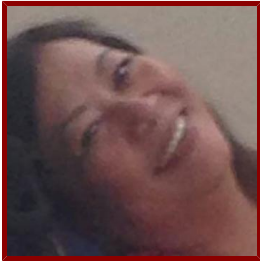


# Stanford

---



## Rosary David

Faculty Administrator, Psychology

### Bio

---

#### CURRENT ROLE AT STANFORD

Bee provides all administrative support to Profs Gross, Walton, Goodman, Dweck and Thomas. This also includes students and research groups in the areas of travel and human subject reimbursements, payments of invoices, verification of PCard and Travel card transactions. She also handles domestic and foreign travel arrangements and in-charge of ordering supplies in the area. She process Visiting Student Researcher and Visiting Scholar paper works.

Bee has been with Stanford for more than 20 years. She started working for Department of Urology, then moved to Department of Medicine as a Residency Coordinator. In 2004, she ventured to Department of Pediatrics to run the Fellowship Program. After working for School of Medicine, she decided to join the other side of the campus in the Department of Theater and Performance Studies and explore her creative side. Bee loves to dance and listen to different kinds of music (except for heavy metal). When she is off from work, she loves to watch various concerts around the Bay Area. She loves dogs and will stop, pet or sometimes talk to dogs that walk around campus. email

#### HONORS AND AWARDS

- Staff Award, Stanford Asian American Community (May 1-, 2012)

#### SERVICE, VOLUNTEER, AND COMMUNITY WORK

- Mentor for Asian American Forum (9/1/2012 - 5/31/2015)
- Volunteer (8/1/2016)
- Member - Leadership Team (9/1/2010)

#### PERSONAL INTERESTS

Watching various concerts and Broadway shows in the Bay Area.

### Professional

---

#### PROFESSIONAL INTERESTS

Creates various flyers and programs using Photoshop.