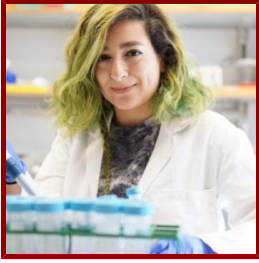


Stanford



Krissie Tellez

Ph.D. Student in Developmental Biology, admitted Autumn 2014

Bio

EDUCATION AND CERTIFICATIONS

- B.S., San Francisco State University , Cell and Molecular Biology (2014)

Research & Scholarship

LAB AFFILIATIONS

- Seung Kim, Seung Kim Lab (6/22/2015)

Publications

PUBLICATIONS

- **Single-cell transcriptomics of 20 mouse organs creates a Tabula Muris.** *Nature* 2018; 562 (7727): 367–72
- **A radial axis defined by semaphorin-to-neuropilin signaling controls pancreatic islet morphogenesis.** *Development (Cambridge, England)* Pauerstein, P. T., Tellez, K., Willmarth, K. B., Park, K. M., Hsueh, B., Efsun Arda, H., Gu, X., Aghajanian, H., Deisseroth, K., Epstein, J. A., Kim, S. K. 2017; 144 (20): 3744–54