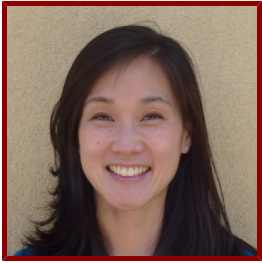


# Stanford

---



## Edith Wu

Associate Dean of First Year Experience, Academic Advising Operations

---

### Bio

#### BIO

Edith Wu-Nguyen is the Associate Dean of First Year Experience in Academic Advising. The FYE team oversees the welcome and transition of new first-year and transfer students to Stanford through the Approaching Stanford process, New Student Orientation, Frosh 101 and Transfer 101, the Leland Scholars Program, and the Stanford Summer Fellows Program. Edith also collaborates closely with University partners to carry out class-based programs that promote a sense of belonging to the Stanford community. As a part of the Office of the Vice Provost for Undergraduate Education, the mission of Academic Advising is to welcome, connect, and support all Stanford undergraduates so they can get the most out of their Stanford education. Academic Advising is broadly responsible for the transition of new students to Stanford; first year experience programs; academic advising; and academic policy and progress.

Edith is also the Resident Fellow (RF) for Okada House, the Asian American ethnic theme house for undergraduate students, where she has served as RF since 2017. Edith earned her Master's degree in 2003 from the Harvard School of Public Health and her Bachelor's degree in 1999 from Stanford where she studied Human Biology and Comparative Studies in Race and Ethnicity. Prior to returning to Stanford in 2006, she worked in community development programs in Santa Clara and San Mateo Counties, including Head Start/Early Head Start, the Lucile Packard Foundation for Children's Health, Asian Americans for Community Involvement, and Public Allies - Silicon Valley.

#### CURRENT ROLE AT STANFORD

Associate Dean, First Year Experience