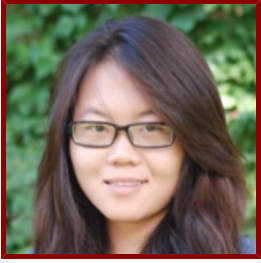


Stanford



Sulgiye Park

Postdoctoral Research Fellow, Geological Sciences

Bio

PROFESSIONAL EDUCATION

- Doctor of Philosophy, Stanford University , GES-PHD (2018)
- Bachelor of Science, University of Michigan Ann Arbor , Geological Sciences (2012)

Teaching

COURSES

2015-16

- Earth Materials: Introduction to Mineralogy: GS 102 (Aut)