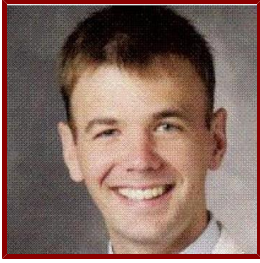


# Stanford

---



## David Svec MD MBA

Clinical Associate Professor, Medicine

### CLINICAL OFFICES

- **Stanford Hospital Medicine**

300 Pasteur Dr Rm HC007

Stanford, CA 94305

**Tel** (925) 416-6681

**Fax** (650) 498-4649

### Bio

---

### CLINICAL FOCUS

- Internal Medicine
- Hospital Medicine

### ACADEMIC APPOINTMENTS

- Clinical Associate Professor, Medicine

### ADMINISTRATIVE APPOINTMENTS

- Chief Medical Officer, Stanford Health Care - ValleyCare, (2017- present)
- SHC-VC Strategic Planning: Research and Education Co-Lead, Stanford Health Care - ValleyCare, (2019-2020)
- Systems Referrals - Committee Co-Chair, Stanford Health Care - Stanford Health Care - ValleyCare, (2018- present)
- Medical Director Hospitalist Team, Stanford Health Care - ValleyCare, (2015- present)
- Ambulatory Network Optimization Task Force, Stanford Health Care, (2018- present)
- Academic University Hospitalist, Stanford Hospital - Palo Alto, (2012- present)
- Faculty Mentor, Core Faculty Mentoring Program, (2013-2018)
- Director, Medicine Consult / Procedure Team Rotation, (2013-2017)
- High Value Care Representative, Stanford HealthCare, (2017-2018)
- Member, SHC Bylaws Committee, (2015-2016)
- Member, Department of Medicine Quality Council, (2013-2015)
- Medicine SIP, Stanford Hospital, (2014-2015)

### HONORS AND AWARDS

- Stupski Planning Grant Recipient, Stanford Health Care - ValleyCare (2019)
- Melinda Mitchell Quality Award, Stanford Health Care (2018)
- David A. Rytand Clinical Teaching Award, Stanford University - Department of Medicine (2016)

- Lawrence Mathers Award: Exceptional Commitment to Teaching / Active Involvement in Medical Student Ed, Stanford School of Medicine (2016)
- VPTL Grant, Stanford University (2016)
- Arthur L. Bloomfield Award for Excellence in Clinical Teaching, Stanford University Medical School (2014)
- David A. Rytand Clinical Teaching Award, Stanford University - Department of Medicine (2014)
- Medical Honor Society, Alpha Omega Alpha (2009)
- Business Honor Society, Beta Gamma Sigma (2009)

## **BOARDS, ADVISORY COMMITTEES, PROFESSIONAL ORGANIZATIONS**

- Member, Society of Hospital Medicine (2013 - 2014)
- Participant, Clinical Effectiveness Leadership Training (2018 - 2019)
- Participant, Stanford Leadership Development Program (2014 - 2015)

## **PROFESSIONAL EDUCATION**

- Medical Education: Case Western Reserve School of Medicine (2009) OH
- Board Certification: Internal Medicine, American Board of Internal Medicine (2012)
- MBA, Case Western Reserve University - Weatherhead School of Management (2009)
- Residency: Stanford University (2012) CA
- BA, University of Notre Dame, Economics - Pre-Medical Studies

## **LINKS**

- Interprofessional Education for 21st Century Care: <https://www.youtube.com/playlist?list=PLra7ak7ILBpB5xkRZ8NU22pf9Xq9SDlq8>
- Stanford Health Care - ValleyCare: [https://valleycare.netreturns.biz/NewsReleases/Article\\_Detail.aspx?id=b413e1d7-036f-4548-af7d-92019d216293#.WxyqUopKiUm](https://valleycare.netreturns.biz/NewsReleases/Article_Detail.aspx?id=b413e1d7-036f-4548-af7d-92019d216293#.WxyqUopKiUm)
- CSRP Project - Accommodations: <https://medicine.stanford.edu/news/current-news/standard-news/csrp.html>

## **Research & Scholarship**

---

### **CURRENT RESEARCH AND SCHOLARLY INTERESTS**

High Value Care: Leading quality improvement projects / research initiatives

### **PROJECTS**

- Cost Savings Reinvestment Program - Stanford Health Care (2017 - 2019)
- Clinical Excellence Research Center - AIM project - Clinical Excellence Research Center (2014)
- Stanford Healthcare Consulting Group - Observation Status: Denial of Admissions and Reimbursement (2013 - 2014)
- Stanford Healthcare Consulting Group - Supporting Clinically Appropriate and Cost-effective Lab Test Utilization (2013 - 2014)
- Stanford Healthcare Consulting Group - Barriers to Discharge for Clinical High Risk Patients (2014)
- Stanford Healthcare Consulting Group - ED Admissions Project (2013)
- Practice of Medicine - Preceptors (2012 - present)
- Stanford Healthcare Consulting Group - Cost Per Case (2014)
- SHIELD: Patient Partners Program (2014)
- Stanford Healthcare Consulting Group - Follow-up Scheduling (2015)
- Stanford ValleyCare: Inpatient Rotation - Developer: Internal Medicine Resident - Stanford ValleyCare
- Stanford ValleyCare: Inpatient Rotation - Developer - PA Student Rotation

- Stanford Healthcare Consulting Group - Clinical Decision Unit (2016)
- Smart wearable devices and patient mobility and sleep during acute hospitalization - ACP Poster (2016)
- An Intervention to Reduce Telemetry Use at an Academic Center and Its Impact on Rapid Response Team and Code Events - ACP Poster (2016)
- Interprofessional Education for 21st Century Care
- Stanford Healthcare Consulting Group - Long Length of Stay Evaluation (2017)
- Collaborate as a Member of an Interprofessional Team—How can we ensure students are ready? - ACP Abstract
- Stanford ValleyCare - Hepatology Transfer Project - Stanford (2016 - 2017)
- Stanford ValleyCare - Vascular Surgery Transfer Project - Stanford University (2016 - 2017)
- Stanford Cardiac Monitoring BPA (Best Practice Alert) - SHC (2016 - 2017)
- Stanford ValleyCare Epic Deployment (2017 - 2018)
- Stanford ValleyCare: Telestroke/Primary Stroke Center (2018)
- A Simple Click: Cost Savings of Best Practice Alerts to Decrease Inappropriate Level of Care Assignments - QIPSS (5/14/2018)
- Rationale and design of the EARLIER\* trial: a randomized evaluation of modest monetary incentives to facilitate prompt patient discharge planning - SHC (5/1/2018)
- Inpatient Length of Stay Increases Due to Consult Delays - Stanford HealthCare (5/1/2018)
- Stanford Healthcare Consulting Group - Improving O:E Mortality at SHC - Stanford University (1/1/2019)
- Stanford Healthcare Consulting Group - Patient Experience: Quiet at Night/Inpatient Sleep (January 2019)
- Stanford Healthcare Consulting Group - SHC Cost: Limited Echo - Stanford University (January 2019)
- Enterprise Contact Center: Stanford HealthCare - ValleyCare - Radiology - Stanford Health Care (June 2018)
- Enterprise Contact Center: Stanford HealthCare - ValleyCare - Physical Therapy/Occupational Therapy - Stanford Health Care (September 2018)
- Clinical Effectiveness Leadership Training - Debility Project - Stanford University (2018 - 2019)
- Stanford Health Care - ValleyCare: Quiet at Night - Stanford Health Care - ValleyCare (2019)
- Co-Lead for SHC-ValleyCare Research and Education Strategic Planning Workgroup - Stanford Health Care - ValleyCare (10/2019)
- Stanford Healthcare Consulting Group - Guided Journey Project / Inpatient MyHealth - Stanford University (2019)
- Stanford Healthcare Consulting Group - Malnutrition CDI - Stanford University (2018 - 2019)

## Teaching

---

### COURSES

#### 2019-20

- Stanford Health Consulting Group- Leadership: MED 278 (Aut, Win, Spr, Sum)
- Stanford Health Consulting Group - Core: MED 279 (Aut, Win, Spr)

#### 2018-19

- Exploration of The Health Care System : Clinical Partnership Development: INDE 292 (Aut, Win, Spr)
- Stanford Health Consulting Group- Leadership: MED 278 (Aut, Win, Spr)
- Stanford Health Consulting Group - Core: MED 279 (Aut, Win, Spr)

#### 2017-18

- A Patient Centered Exploration of Health and The Health Care System Practicum: INDE 291, PAS 281 (Aut, Win, Spr)
- Exploration of The Health Care System : Clinical Partnership Development: INDE 292 (Aut, Win, Spr)
- Walk With Me: A Patient Centered Exploration of Health and The Health Care System: INDE 290B (Win)

- Walk With Me: A Patient Centered Exploration of Health and The Health Care System: INDE 290C (Spr)
- Walk With Me: A Patient Centered Exploration of Health and The Health Care System: PAS 280B (Win)
- Walk With Me: A Patient Centered Exploration of Health and The Health Care System: PAS 280C (Spr)

#### 2016-17

- Patient Partner Skills: in Care Transitions: MED 203 (Aut)

## Publications

---

### PUBLICATIONS

- **Hospitalist intervention for appropriate use of telemetry reduces length of stay and cost** *JOURNAL OF HOSPITAL MEDICINE*  
Svec, D., Ahuja, N., Evans, K. H., Hom, J., Garg, T., Loftus, P., Shieh, L.  
2015; 10 (9): 627-632
- **Reducing Telemetry Use Is Safe: A Retrospective Analysis of Rapid Response Team and Code Events After a Successful Intervention to Reduce Telemetry Use** *AMERICAN JOURNAL OF MEDICAL QUALITY*  
Xie, L., Garg, T., Svec, D., Hom, J., Kaimal, R., Ahuja, N., Barnes, J., Shieh, L.  
2019; 34 (4): 398–401
- **Waiting it out: consultation delays prolong in-patient length of stay.** *Postgraduate medical journal*  
Rahman, A. S., Shi, S., Meza, P. K., Jia, J. L., Svec, D., Shieh, L.  
2019
- **Waiting it out: Consultation delays prolong in-patient length of stay** *Postgraduate Medical Journal*  
Rahman, A. S., Shi, S., Meza, P. K., Jia, J. L., Svec, D., Shieh, L.  
2019
- **A long wait: barriers to discharge for long length of stay patients.** *Postgraduate medical journal*  
Zhao, E. J., Yeluru, A., Manjunath, L., Zhong, L. R., Hsu, H., Lee, C. K., Wong, A. C., Abramian, M., Manella, H., Svec, D., Shieh, L.  
2018
- **Reducing Telemetry Use is Safe: A Retrospective Analysis of Rapid Response Team and Code Events After a Successful Intervention to Reduce Telemetry Use** *American Journal of Medical Quality*  
Lijia, X., Svec, D., Hom, J., Ahuja, N., Garg, T., Kaimal, R., Barnes, J., Shieh, L.  
2018
- **Evolving Medical Education for a Digital Future**  
Connie, C., David, S., Jonathan, C.  
Medscape.  
2018
- **Barriers to timely discharge from the general medicine service at an academic teaching hospital.** *Postgraduate medical journal*  
Ragavan, M. V., Svec, D., Shieh, L.  
2017
- **A High Value Care Curriculum for Interns: A Description of Curricular Design, Implementation and Housestaff Feedback.** *Postgraduate Medical Journal*  
Hom, J., Kumar, A., Evans, K., Svec, D., Richman, I., Fang, D., Smeraglio, A., Holubar, M., Johnson, T., Shah, N., Renault, C., Witteles, R., Ahuja, et al  
2017
- **Creating the medical school of the future through incremental curricular transformation: the Stanford Healthcare Innovations and Experiential Learning Directive (SHIELD)** *EDUCATION FOR PRIMARY CARE*  
Lin, S., Osborn, K., Sattler, A., Nelligan, I., Svec, D., Aaronson, A., Schillinger, E.  
2017; 28 (3): 180–84
- **Physicians and blocking: can we tear down this wall?** *Postgraduate medical journal*  
Wang, B., Svec, D.  
2017

- **Interprofessional Collaboration: A Qualitative Study of Non-Physician Perspectives on Resident Competency** *Interprofessional Collaboration: A Qualitative Study of Non-Physician Perspectives on Resident Competency*  
Garth, M., Millet, A., Shearer, E., Stafford, S., Merrell, S. B., Bruce, J., Schillinger, E., Aaronson, A., Svec, D.  
2017
- **The effect of dehydroepiandrosterone on Zucker rats selected for fat food preference** *Physiology & Behavior*  
Pham J, Porter J, Svec D, Eiswirth C, Svec F.  
2000; 70 (5): 431-41

## PRESENTATIONS

- High Value Care Curriculum (2014)
- Stanford 25 - Benign paroxysmal positional vertigo (BPPV) - Internal Medicine Residency (2013)
- Schwartz Rounds - Code Discussion (2014)
- Morbidity and Mortality - Stanford Internal Medicine Morning Report Discussant (2014)
- MD Capstone Experience: Preparation for Residency (2014 - present)
- Practice of Medicine - Interpreter Curriculum - Instructor (2014)
- ACP Clinical Vignette: Case of ANCA-Associated Vasculitis (2012)
- University Graduate Portfolio - Gigot Center for Entrepreneurial Studies, University of Notre Dame (2008)
- SGIM Poster Presentation: A New Curriculum & Associated Research Study About Teaching High-Value Care to Interns - SGIM Los Angeles (January 10, 2015)
- SHM Poster Presentation: Costs and laboratory characteristics of pending studies at discharge (2015)
- ACP Poster Presentation: Barriers to Timely Discharge from the General Medicine Ward at an Academic Tertiary Care Center (2015)
- ACP Poster Presentation: Costs and laboratory characteristics of pending studies at discharge
- Sustainability of a Hospitalist Led Intervention to Reduce Length of Stay on Telemetry
- LOS Outliers: A Challenging Problem for Both the Teaching and Private Non-Teaching General Medicine Services at Stanford Hospital - SGIM
- Patient Partners and L-CHAMP: student involvement in two early clinical exposure courses at Stanford Medical School - FCM 12th Annual Rodnick Colloquium, themed Health Equity: Responding to a Call for Action (6/2/2016)
- SHIELD: The Stanford Healthcare Innovations and Experiential Learning Directive - Stanford Innovations in Medical Education Conference
- Optimizing the Stanford Internal Medicine Discharge Follow-Up Appointment Process - QI Symposium (5/2016)
- Quick QI for the 1st Year Medical Student - Stanford (5/2016)
- Stanford VPTL Showcase - VPTL (4/7/2017)
- Using smart wearable devices to assess patient mobility and sleep during acute hospitalization - ACP Poster (10/2016)
- Stanford Health Care - ValleyCare - Board Presentation - Quality Subgroup - Stanford Health Care - ValleyCare (2017)
- Engaging the Front Line Physicians: Decreasing Inappropriate Use of IICU Level of Care Accommodations - Vizient Power Huddle (9/19/2019 - 9/19/2019)
- Access Initiative - AAMC/Vizient (12/19/2019)