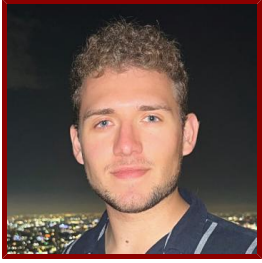


Stanford



Steven Dillmann

Ph.D. Student in Computational and Mathematical Engineering, admitted Autumn 2024

Bio

EDUCATION AND CERTIFICATIONS

- MPhil, University of Cambridge , Data Intensive Science (2024)
- MEng, Imperial College London , Aeronautics with Spacecraft Engineering (2023)

LINKS

- LinkedIn: <https://www.linkedin.com/in/stevendillmann/>

Publications

PUBLICATIONS

- **The Cloudspotting on Mars citizen science project: Seasonal and spatial cloud distributions observed by the Mars Climate Sounder *ICARUS***
Slipski, M., Kleinbohl, A., Dillmann, S., Kass, D. M., Reimuller, J., Wronkiewicz, M., Doran, G.
2024; 419
- **The impact of satellite trails on Hubble Space Telescope observations *NATURE ASTRONOMY***
Kruk, S., Garcia-Martin, P., Popescu, M., Aussel, B., Dillmann, S., Perks, M. E., Lund, T., Merin, B., Thomson, R., Karadag, S., McCaughrean, M. J.
2023; 7 (3): 262-268