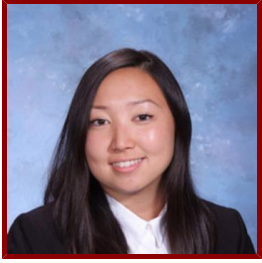


# Stanford

---



## Christianna Sim

Clinical Instructor, Emergency Medicine

### **CLINICAL OFFICE (PRIMARY)**

- **Stanford Dept of Emergency Medicine**

900 Welch Rd Ste 350

MC 5768

Stanford, CA 94305

**Tel** (650) 725-9445

**Fax** (650) 723-0121

### **Bio**

---

#### **CLINICAL FOCUS**

- Emergency Medicine

#### **ACADEMIC APPOINTMENTS**

- Clinical Instructor, Emergency Medicine

#### **PROFESSIONAL EDUCATION**

- Residency: SUNY Downstate Medical Center Internal Medicine (2023) NY
- Medical Education: SUNY Downstate College of Medicine (2018) NY