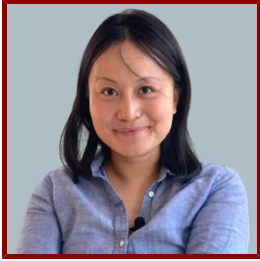


Stanford



Lijia Xie

Clinical Assistant Professor, Medicine

Bio

ACADEMIC APPOINTMENTS

- Clinical Assistant Professor, Medicine

ADMINISTRATIVE APPOINTMENTS

- Associate Medical Education Director, Stanford ValleyCare, (2022- present)

BOARDS, ADVISORY COMMITTEES, PROFESSIONAL ORGANIZATIONS

- Member, Society of Hospital Medicine Education Committee (2020 - present)

PROFESSIONAL EDUCATION

- Board Certification, American Board of Internal Medicine (2018)
- Residency, Stanford University (2018)
- MD/MS, UC Berkeley-UCSF Joint Medical Program (2015)
- BA, UC Berkeley , Interdisciplinary Studies (2009)

Publications

PUBLICATIONS

- **Time on Therapy for at Least Three Months Correlates with Overall Survival in Metastatic Renal Cell Carcinoma.** *Cancers*
Chen, V. J., Hernandez-Meza, G. n., Agrawal, P. n., Zhang, C. A., Xie, L. n., Gong, C. L., Hoerner, C. R., Srinivas, S. n., Oermann, E. K., Fan, A. C.
2019; 11 (7)
- **Reducing Telemetry Use Is Safe: A Retrospective Analysis of Rapid Response Team and Code Events After a Successful Intervention to Reduce Telemetry Use.** *American journal of medical quality : the official journal of the American College of Medical Quality*
Xie, L., Garg, T., Svec, D., Hom, J., Kaimal, R., Ahuja, N., Barnes, J., Shieh, L.
2018: 1062860618805189
- **Shared Decision-Making During Inpatient Rounds: Opportunities for Improvement in Patient Engagement and Communication** *JOURNAL OF HOSPITAL MEDICINE*
Blankenburg, R., Hilton, J. F., Yuan, P., Rennke, S., Monash, B., Harman, S. M., Sakai, D. S., Hosamani, P., Khan, A., Chua, I., Huynh, E., Shieh, L., Xie, et al
2018; 13 (7): 453–61
- **Domestic Violence Counseling in Rural Northern China: Gender, Social Harmony, and Human Rights** *VIOLENCE AGAINST WOMEN*
Xie, L., Eyre, S. L., Barker, J.
2018; 24 (3): 307–21
- **Scedosporium apiospermum infection of the urinary system with a review of treatment options and cases in the literature** *TRANSPLANT INFECTIOUS DISEASE*

Benamu, E., Yu, A., Xie, L., Fernandez-Pol, S., Liu, A. Y., Ho, D. Y.
2018; 20 (1)

- **Osimertinib for EGFR-Mutant Lung Cancer with Brain Metastases: Results from a Single-Center Retrospective Study.** *The oncologist*
Xie, L. n., Nagpal, S. n., Wakelee, H. A., Li, G. n., Soltys, S. G., Neal, J. W.
2018
- **GOT SDM?: A MULTIMODAL INTERVENTION TO IMPROVE SHARED DECISION-MAKING DURING INPATIENT ROUNDS ON MEDICINE AND PEDIATRIC SERVICES**
Blankenburg, R., Rennke, S., Sakai, D. S., Harman, S. M., Yuan, P., Hosamani, P., Xie, L., Shieh, L., Chua, I., Khan, A., Huynh, E., Satterfield, J., Monash, et al
SPRINGER.2016: S233–S234
- **SHARED DECISION MAKING DURING INPATIENT ROUNDS: OPPORTUNITIES FOR BEHAVIORAL MEDICINE TO IMPROVE COMMUNICATION**
Satterfield, J., Blankenburg, R., Monash, B., Yuan, P., Harman, S., Hilton, J. F., Sakai, D. S., Chua, I., Huynh, E., Hosamani, P., Khan, A., Shieh, L., Xie, et al
OXFORD UNIV PRESS INC.2016: S298
- **SHARED DECISION-MAKING DURING INPATIENT ROUNDS: DISSIMILAR YET CORRELATED PERSPECTIVES OF PATIENTS/GUARDIANS AND PHYSICIAN OBSERVERS**
Rennke, S., Monash, B., Blankenburg, R., Yuan, P., Harman, S. M., Hilton, J. F., Sakai, D. S., Chua, I., Huynh, E., Hosamani, P., Khan, A., Shieh, L., Xie, et al
SPRINGER.2015: S252