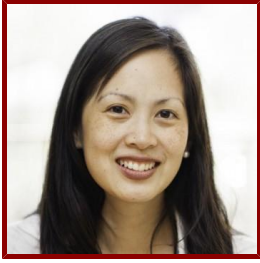


Stanford



Ann Ming Yeh

Clinical Associate Professor, Pediatrics - Gastroenterology

CLINICAL OFFICES

- **Stanford Children's Pediatric Gastroenterology**

321 Middlefield Rd Ste 216

Menlo Park, CA 94025

Tel (650) 736-3555 **Fax** (408) 524-5863

- **Pediatric Gastroenterology**

750 Welch Road Ste 116

Palo Alto, CA 94304

Tel (650) 725-2531 **Fax** (650) 498-5608

Bio

BIO

Dr. Ann Ming Yeh is a Clinical Associate Professor at Stanford University in Pediatric Gastroenterology and practices at Lucile Packard Children's Hospital and Stanford Children's Health. She completed her residency and GI fellowship at Stanford University.

Dr. Yeh's research interests include diet therapies for inflammatory bowel disease, nutrition, small intestinal bacterial overgrowth, and integrative medicine for pediatric gastroenterology. She has presented her work on fatty liver, inflammatory bowel disease and integrative medicine at national meetings.

She completed a two-year distance learning fellowship through the University of Arizona's Center for Integrative Medicine where she gained additional expertise in mind-body therapies, botanicals, and nutritional supplements. With skill and compassion, Dr. Yeh treats her patients with a comprehensive, evidence-based, holistic approach. She is also a formally trained and board-certified medical acupuncturist. She is currently the program director for the nation's premier fellowship for Pediatric Integrative Medicine at Stanford.

Outside of medicine, she enjoys yoga, gardening, hiking, and traveling with her family.

CLINICAL FOCUS

- Pediatric Gastroenterology
- Integrative Medicine
- Inflammatory Bowel Diseases
- Child Nutrition Disorders
- Food as Medicine

- Medical Acupuncture

ACADEMIC APPOINTMENTS

- Clinical Associate Professor, Pediatrics - Gastroenterology
- Member, Maternal & Child Health Research Institute (MCHRI)

HONORS AND AWARDS

- Bechtel Fellow in Pediatric Translational Medicine Research Award, Lucile Packard Children's Hospital (June 2012)

BOARDS, ADVISORY COMMITTEES, PROFESSIONAL ORGANIZATIONS

- member, NASPGHAN (2010 - present)

PROFESSIONAL EDUCATION

- Fellowship: University of Arizona Center for Integrative Medicine (2014) AZ
- Medical Education: Albert Einstein College of Medicine (2006) NY
- Fellowship: Stanford University Pediatric Gastroenterology (2011) CA
- Residency: Stanford University Pediatric Residency (2009) CA
- Board Certification: Acupuncture, American Board of Medical Acupuncture
- Board Certification: Pediatric Gastroenterology, American Board of Pediatrics (2013)
- Board Certification, American Board of Pediatrics, Gastroenterology , Pediatric Gastroenterology (2013)
- Professional Education: Helms Medical Institute (2010) CA
- Board Certification: Pediatrics, American Board of Pediatrics (2009)

Publications

PUBLICATIONS

- **Integrative Medicine in Child Neurology: What Do Physicians Know and What Do They Want to Learn?** *Journal of child neurology*
Sandoval Karamian, A. G., Yeh, A. M., Wusthoff, C. J.
2020: 883073820925285
- **Intraoperative Liver Biopsy During Adolescent Bariatric Surgery: Is It Really Necessary?** *Obesity surgery*
Jones, R. E., Yeh, A. M., Kambham, N., El Haija, M. A., Pratt, J., Bruzoni, M.
2019
- **Integrative Approach to Pediatric Nausea** *PEDIATRIC ANNALS*
Arruda, J., Yeh, A.
2019; 48 (6): E236–E242
- **Pediatric Integrative Medicine in Academia: Stanford Children's Experience** *CHILDREN-BASEL*
Ramesh, G., Gerstbacher, D., Arruda, J., Golianu, B., Mark, J., Yeh, A.
2018; 5 (12)
- **Yoga as adjunct therapy for adolescents with inflammatory bowel disease: A pilot clinical trial** *COMPLEMENTARY THERAPIES IN MEDICINE*
Arruda, J. M., Bogetz, A. L., Vellanki, S., Wren, A., Yeh, A.
2018; 41: 99–104
- **Wired for Threat: Clinical Features of Nervous System Dysregulation in 80 Children.** *Pediatric neurology*
Elbers, J., Jaradeh, S., Yeh, A. M., Golianu, B.
2018
- **Integrative Medicine in Child Neurology: what do providers think and what do they need to learn?**
Karamian, A., Yeh, A., Wusthoff, C.

LIPPINCOTT WILLIAMS & WILKINS.2018

- **Pediatric Integrative Medicine in Residency Program: Relationship between Lifestyle Behaviors and Burnout and Wellbeing Measures in First-Year Residents** *CHILDREN-BASEL*
McClafferty, H., Brooks, A. J., Chen, M., Brenner, M., Brown, M., Esparham, A., Gerstbacher, D., Golianu, B., Mark, J., Weydert, J., Yeh, A., Maizes, V.
2018; 5 (4)
- **Pediatric Integrative Medicine in Academia: Stanford Children's Experience.** *Children (Basel, Switzerland)*
Ramesh, G. n., Gerstbacher, D. n., Arruda, J. n., Golianu, B. n., Mark, J. n., Yeh, A. M.
2018; 5 (12)
- **Pediatric Integrative Medicine** *PEDIATRICS*
McClafferty, H., Vohra, S., Bailey, M., Brown, M., Esparham, A., Gerstbacher, D., Golianu, B., Niemi, A., Sibinga, E., Weydert, J., Yeh, A., Sect Integrative Med
2017; 140 (3)
- **Mind-Body Interventions for Pediatric Inflammatory Bowel Disease.** *Children (Basel, Switzerland)*
Yeh, A. M., Wren, A., Golianu, B.
2017; 4 (4)
- **Spanish and English Language Symposia to Enhance Activation in Pediatric Inflammatory Bowel Disease.** *Journal of pediatric gastroenterology and nutrition*
Martin, M., Garcia, M., Christofferson, M., Bensen, R., Yeh, A. M., Park, K. T.
2016; 63 (5): 508-511
- **Bugs and Guts: Practical Applications of Probiotics for Gastrointestinal Disorders in Children** *NUTRITION IN CLINICAL PRACTICE*
Barnes, D., Yeh, A. M.
2015; 30 (6): 747-759
- **Acupuncture and Integrative Medicine for Pediatric Gastroesophageal Reflux and Functional Dyspepsia** *MEDICAL ACUPUNCTURE*
Kanak, M., Park, K. T., Yeh, A.
2015; 27 (6): 467-74
- **Integrative Treatment of Reflux and Functional Dyspepsia in Children.** *Children (Basel, Switzerland)*
Yeh, A. M., Golianu, B.
2014; 1 (2): 119-133
- **Acupuncture for Pediatric Pain.** *Children (Basel, Switzerland)*
Golianu, B., Yeh, A. M., Brooks, M.
2014; 1 (2): 134-148
- **Infliximab for the treatment of granulomatous peritonitis.** *Digestive diseases and sciences*
Yeh, A. M., Kerner, J., Hillard, P., Bass, D.
2013; 58 (12): 3397-3399
- **Acute Liver Failure and Aplastic Anemia in an 11-Year-Old Girl** *DIGESTIVE DISEASES AND SCIENCES*
Yeh, A. M., Mojtahed, A., Bass, D.
2011; 56 (8): 2237-2240