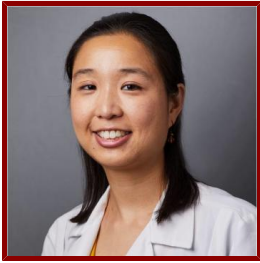


Stanford



Ann Shue, MD

Clinical Assistant Professor, Ophthalmology

CLINICAL OFFICES

- **Stanford Byers Eye Institute**

2452 Watson Ct

MC 5353

Palo Alto, CA 94303

Tel (650) 723-6995 **Fax** (650) 565-8297

- **Stanford Children's Health Specialty Services Los Gatos**

14601 S Bascom Ave Ste 200

Los Gatos, CA 95032

Tel (650) 723-1143 **Fax** (650) 725-0288

- **Mary L Johnson Specialty Services**

730 Welch Rd

Palo Alto, CA 94304

Tel (650) 723-1143 **Fax** (650) 725-0288

Bio

BIO

****Dr. Shue is taking new patients for glaucoma, cataracts, and adult strabismus.****

Ann Shue, MD, is a Clinical Assistant Professor of Ophthalmology at Stanford University School of Medicine, where she specializes in glaucoma, pediatric ophthalmology, and adult strabismus, a unique combination of subspecializations practiced by few surgeons worldwide. She is a board-certified ophthalmologist who completed fellowships in glaucoma at Yale University and pediatric ophthalmology and adult strabismus at Duke University. She practices at the Stanford Byers Eye Institute and the Lucile Packard Children's Hospital.

Dr. Shue loves seeing patients of all ages with eye problems big or small, including glaucoma due to any reason, glaucoma suspicion, family history of glaucoma, cataracts, strabismus (eye misalignment) or double vision from any cause, including after eye surgeries. She completed her ophthalmology residency at the University of Pittsburgh and an internal medicine internship at UCSF Fresno. She holds a medical degree from University of California, Irvine and an undergraduate degree in biology from Yale University.

Dr. Shue is a member of the American Glaucoma Society, the American Association for Pediatric Ophthalmology and Strabismus, and the UK Paediatric Glaucoma Society. She is active in presenting at regional and national conferences. She is the author of several journal articles and recently wrote two textbook chapters on pediatric glaucoma and pediatric glaucoma surgery.

CLINICAL FOCUS

- Ophthalmology

ACADEMIC APPOINTMENTS

- Clinical Assistant Professor, Ophthalmology
- Member, Maternal & Child Health Research Institute (MCHRI)

PROFESSIONAL EDUCATION

- Residency: University of Pittsburgh Medical Center Dept of Ophthalmology (2017) PA
- Board Certification: Ophthalmology, American Board of Ophthalmology (2019)
- Fellowship: Duke University Medical Center Ophthalmology Fellowships (2019) NC
- Fellowship: Yale University Ophthalmology Fellowships (2018) CT
- Internship: UCSF Fresno Internal Medicine Residency (2014) CA
- Medical Education: University of California at Irvine School of Medicine Registrar (2013) CA

Publications

PUBLICATIONS

- **2021 U.S. Virgin Islands Zika health brigade: Providing recommended pediatric health screenings for children born to mothers with laboratory evidence of possible Zika virus infection during pregnancy.** *Birth defects research*
de Wilde, L. H., Harrison, C. J., Ceesay, B. E., Mayers, C. S., Ferrol-Hawley, J., Canton, J., Godfred-Cato, S., Reynolds, M. R., Brown-Shuler, L., Randhawa, S., Schoelles, D., Hillman, B., Carlos, et al
2022
- **Strabismus and Nystagmus in Patients with Pediatric Cataracts: Study using Insurance Claims Data.** *American journal of ophthalmology*
Kim, S. J., Slinger, K., Lambert, S. R., Koo, E., Shue, A., Roberts, T. L.
2022
- **Axenfeld-Rieger syndrome: more than meets the eye.** *Journal of medical genetics*
Reis, L. M., Maheshwari, M., Capasso, J., Atilla, H., Dudakova, L., Thompson, S., Zitano, L., Lay-Son, G., Lowry, R. B., Black, J., Lee, J., Shue, A., Kremlikova Pourova, et al
2022
- **Repeatability and correlation of a virtual reality perimeter with standard automated perimetry in glaucoma patients**
Chaudhry, A., Berneshawi, A., Liu, J., Shue, A., Chang, D., Kim, J., Chang, R. T.
ASSOC RESEARCH VISION OPHTHALMOLOGY INC.2022
- **Feasibility of Glaucoma Home Self Testing Using a Virtual Reality Visual Field Test Combined with Home Tonometry**
Berneshawi, A., Shue, A., Chang, R.
ASSOC RESEARCH VISION OPHTHALMOLOGY INC.2022
- **Anterior and temporal transposition of the superior oblique for treatment of exotropia in oculomotor nerve palsy.** *Journal of AAPOS : the official publication of the American Association for Pediatric Ophthalmology and Strabismus*
Bonafede, L., Law, M., Scott, A. B., Shue, A., Velez, F. G.
2022
- **Rare Complications of Selective Laser Trabeculoplasty - Corneal Edema, Thinning and Hyperopic Shift: Incidences in the Optum Data Set**
Shue, A., Villegas, N. C., Wang, S. Y.
ASSOC RESEARCH VISION OPHTHALMOLOGY INC.2021

- **The Ophthalmology Mini-Elective Gives Vision to Preclinical Medical Students.** *MedEdPORTAL : the journal of teaching and learning resources*
Mortensen, P., Enzor, R., Keppel, K., Williamson, R., Jones, P., Nkrumah, G., Safiullah, Z., Michelson, S., Nadimpalli, S., Shue, A., Waxman, E.
2020; 16: 11024
- **Oculocerebrorenal syndrome of Lowe: Survey of ophthalmic presentations and management.** *European journal of ophthalmology*
Ma, X. n., Ning, K. n., Jabbehdari, S. n., Prosseda, P. P., Hu, Y. n., Shue, A. n., Lambert, S. R., Sun, Y. n.
2020: 1120672120920544