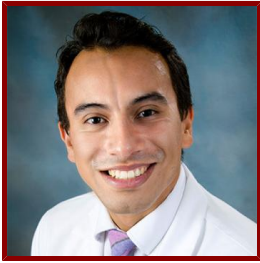


Stanford



Pablo Garcia

- Postdoctoral Medical Fellow, Nephrology
- Masters Student in Epidemiology and Clinical Research, admitted Autumn 2019
- Fellow in Medicine

Bio

HONORS AND AWARDS

- Alpha Omega Alpha, Stanford University School of Medicine (2020)
- Karen L. Campbell, PhD, Travel Support, American Society of Nephrology (2019)
- Clinical Scientist in Nephrology Award, American Kidney Fund (2019)
- Outstanding Resident Award, Rutgers/Saint Peter's University Hospital (2018)
- Innovation in Medicine Award, Rutgers/Saint Peter's University Hospital (2018)
- Chief Resident, Internal Medicine, Rutgers/Saint Peter's University Hospital (2016-17)
- ASN Kidney STARS Award, American Society of Nephrology (2016)

PROFESSIONAL EDUCATION

- Internal Medicine, Rutgers/Saint Peter's University Hospital (2017)
- MD, Universidad San Carlos de Guatemala, Facultad de Ciencias Médicas (2012)

Teaching

GRADUATE AND FELLOWSHIP PROGRAM AFFILIATIONS

- Epidemiology (Masters Program)
- Health Services Research (Masters Program)
- Nephrology (Fellowship Program)

Publications

PUBLICATIONS

- **Challenges in the provision of kidney care at the largest public nephrology center in Guatemala: a qualitative study with health professionals.** *BMC nephrology*
Flood, D., Wilcox, K., Ferro, A. A., Mendoza Montano, C., Barnoya, J., Garcia, P., Lou-Meda, R., Rohloff, P., Chary, A.
2020; 21 (1): 71
- **CKD Care and Research in Guatemala: Overview and Meeting Report.** *Kidney international reports*
Garcia, P., Mendoza, C., Barnoya, J., Monzón, J., Miller, A. C., Aguilar-González, A., Boj, J., Cifuentes, A., Dávila, P., Flood, D., Guzmán-Quilo, C., Hernandez, A., Lou-Meda, et al
2020; 5 (9): 1567–75
- **Screening for chronic kidney disease in a community-based diabetes cohort in rural Guatemala: a cross-sectional study.** *BMJ open*
Flood, D., Garcia, P., Douglas, K., Hawkins, J., Rohloff, P.

2018; 8 (1): e019778

- **Treatment of end-stage renal disease with continuous ambulatory peritoneal dialysis in rural Guatemala.** *BMJ case reports*
Moore, J., Garcia, P., Rohloff, P., Flood, D.
2018; 2018
- **Perceptions and utilization of generic medicines in Guatemala: a mixed-methods study with physicians and pharmacy staff.** *BMC health services research*
Flood, D., Mathieu, I., Chary, A., García, P., Rohloff, P.
2017; 17 (1): 27
- **A quality improvement project using statistical process control methods for type 2 diabetes control in a resource-limited setting.** *International journal for quality in health care : journal of the International Society for Quality in Health Care*
Flood, D., Douglas, K., Goldberg, V., Martinez, B., Garcia, P., Arbour, M., Rohloff, P.
2017; 29 (4): 593–601
- **A Patient Navigation System to Minimize Barriers for Peritoneal Dialysis in Rural, Low-Resource Settings: Case Study From Guatemala.** *Kidney international reports*
Flood, D. C., Chary, A. N., Austad, K., Garcia, P., Rohloff, P. J.
2017; 2 (4): 762–65
- **Trends of Cannabis Use Disorder in the Inpatient: 2002 to 2011.** *The American journal of medicine*
Charilaou, P., Agnihotri, K., Garcia, P., Badheka, A., Frenia, D., Yegneswaran, B.
2017; 130 (6): 678–87.e7
- **Navigating Bureaucracy: Accompanying Indigenous Maya Patients with Complex Health Care Needs in Guatemala** *HUMAN ORGANIZATION*
Chary, A., Flood, D., Austad, K., Moore, J., King, N., Martinez, B., Garcia, P., Lopez, W., Dasgupta-Tsikinas, S., Rohloff, P.
2016; 75 (4): 305–14
- **Argininemia as a cause of severe chronic stunting in a low-resource developing country setting: a case report.** *BMC pediatrics*
King, N., Alvizures, R., García, P., Wessel, A., Rohloff, P.
2016; 16 (1): 142
- **Implementation and Outcomes of a Comprehensive Type 2 Diabetes Program in Rural Guatemala.** *PloS one*
Flood, D., Mux, S., Martinez, B., García, P., Douglas, K., Goldberg, V., Lopez, W., Rohloff, P.
2016; 11 (9): e0161152