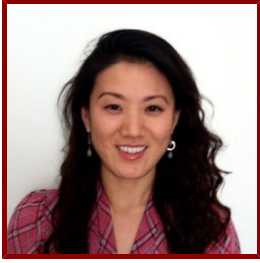


Stanford



Diana H. Yu, MD

Clinical Assistant Professor, Medicine - Pulmonary & Critical Care Medicine

CLINICAL OFFICES

- **Pulmonary and Critical Care**

300 Pasteur Dr H3143 MC 5236

Stanford, CA 94305

Tel (650) 723-6381

Fax (650) 498-6288

Bio

BIO

Dr. Diana H. Yu is an Interventional Pulmonologist and Clinical Assistant Professor of Medicine at Stanford University School of Medicine. Her areas of clinical expertise include minimally invasive diagnostic and therapeutic bronchoscopic and pleural procedures, complex airway diseases (malignant and non-malignant), airway obstructions, lung nodules/cancer, complex pleural diseases, and lung transplant airway complications. She has sub-specialty training in rigid bronchoscopy, tumor ablative therapies (argon plasma coagulation, laser therapy, electrocautery, and cryotherapy), tracheal/bronchial stent placement, airway balloon dilation, percutaneous tracheostomy, endobronchial valve insertion, radial/linear endobronchial ultrasound (EBUS), electromagnetic navigational bronchoscopy, indwelling pleural catheter placement, thoracostomy tube insertion, medical thoracoscopy, and whole lung lavage.

Her research interests include investigating the cellular and animal models to elucidate the mechanism of post-transplant bronchial stenosis and idiopathic tracheal stenosis, as well as endobronchial ultrasound (EBUS) bronchoscopy-guided cardiac plexus neurolysis for the treatment of refractory tachyarrhythmia.

CLINICAL FOCUS

- Interventional Pulmonology
- Complex Central Airway Disease (Malignant and Non-malignant)
- Airway Obstructions
- Pulmonary Disease
- Thoracic Oncology
- Lung Nodules
- Lung Cancer
- Pleural Disease
- Lung Transplant Airway Complications

ACADEMIC APPOINTMENTS

- Clinical Assistant Professor, Medicine - Pulmonary & Critical Care Medicine

PROFESSIONAL EDUCATION

- Fellowship, Johns Hopkins University School of Medicine , Interventional Pulmonology (2018)
- Fellowship, University of California Los Angeles, David Geffen School of Medicine , Pulmonary Disease and Critical Care Medicine (2016)
- Residency, University of California Irvine, School of Medicine , Internal Medicine (2013)
- Board Certification, American Association of Bronchology and Interventional Pulmonology , Interventional Pulmonology (2018)
- Board Certification, American Board of Internal Medicine , Critical Care Medicine (2018)
- Board Certification, American Board of Internal Medicine , Pulmonary Disease (2015)
- Board Certification, American Board of Internal Medicine , Internal Medicine (2014)
- M.D., Rush Medical College of Rush University , Chicago, IL (2010)
- B.A., University of California Berkeley , Molecular Cell Biology and Music (2001)