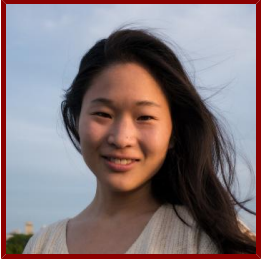


Stanford



Libby Zhang

Ph.D. Student in Electrical Engineering, admitted Autumn 2018

Bio

STANFORD ADVISORS

- Stephen Boyd, Doctoral Dissertation Reader (AC)
- Scott Linderman, Doctoral Dissertation Advisor (AC)

Publications

PUBLICATIONS

- **Animal pose estimation from video data with a hierarchical von Mises-Fisher-Gaussian model**
Zhang, L., Dunn, T., Marshall, J., Olveczky, B., Linderman, S., Banerjee, A., Fukumizu, K.
MICROTOME PUBLISHING.2021