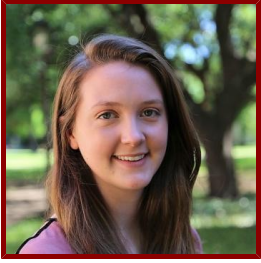


# Stanford

---



## Sarah Hooper

- Ph.D. Student in Electrical Engineering, admitted Autumn 2017
- Masters Student in Electrical Engineering, admitted Autumn 2017

### Bio

---

#### BIO

I work on problems at the intersection of machine learning and medicine, with a focus on medical imaging. I am driven to help improve global health outcomes by increasing the accessibility of healthcare with new technology. At Stanford, I work with Dr. Sanjiv Sam Gambhir's group in Radiology and Dr. Chris Ré's group in Computer Science.

#### HONORS AND AWARDS

- Fellow, Hertz Foundation
- Fellow, National Science Foundation Graduate Research Fellowship
- Fellow, Stanford Graduate Fellowship in Science and Engineering

#### EDUCATION AND CERTIFICATIONS

- B.S., Rice University , Electrical Engineering (2017)
- Minor, Rice University , Global Health Technologies (2017)

### Research & Scholarship

---

#### CURRENT RESEARCH AND SCHOLARLY INTERESTS

Medical and molecular imaging, machine learning to improve healthcare

#### LAB AFFILIATIONS

- Sanjiv Gambhir (1/8/2018)