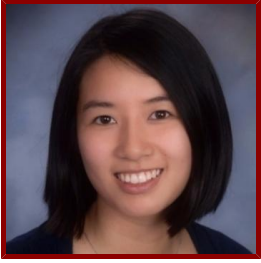


Stanford



Jasmine Ling Shu

Casual - Non-Exempt, Rad/Pediatric Radiology

Publications

PUBLICATIONS

- **Adaptive Grayscale Mapping to Improve Molecular Ultrasound Difference Images**
Shu, J., Hyun, D., Abou-Elkacem, L., Willmann, J., Dahl, J., IEEE
IEEE.2018