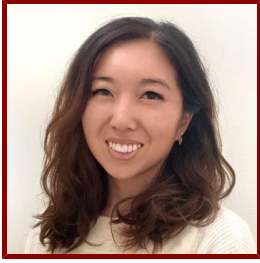


Stanford



Chloe Eng

Postdoctoral Scholar, Epidemiology

Bio

STANFORD ADVISORS

- David Rehkopf, Postdoctoral Faculty Sponsor

LINKS

- Personal Website: www.chloeeng.com

Publications

PUBLICATIONS

- **Timing and level of educational attainment and late-life cognition in the KHANDLE study.** *Alzheimer's & dementia : the journal of the Alzheimer's Association*
Soh, Y., Whitmer, R. A., Mayeda, E. R., Glymour, M. M., Eng, C. W., Peterson, R. L., George, K. M., Chen, R., Quesenberry, C. P., Mungas, D. M., DeCarli, C. S., Gilsanz, P.
2023
- **The Mediating Roles of Neurobiomarkers in the Relationship Between Education and Late-Life Cognition.** *Journal of Alzheimer's disease : JAD*
Amofa-Ho, P. A., Stickel, A. M., Chen, R., Kobayashi, L. C., Glymour, M. M., Eng, C. W.
2023
- **Association of primary lifetime occupational cognitive complexity and cognitive decline in a diverse cohort: Results from the KHANDLE study.** *Alzheimer's & dementia : the journal of the Alzheimer's Association*
Soh, Y., Eng, C. W., Mayeda, E. R., Whitmer, R. A., Lee, C., Peterson, R. L., Mungas, D. M., Glymour, M. M., Gilsanz, P.
2023
- **State-Level Indicators of Childhood Educational Quality and Incident Dementia in Older Black and White Adults.** *JAMA neurology*
Soh, Y., Whitmer, R. A., Mayeda, E. R., Glymour, M. M., Peterson, R. L., Eng, C. W., Quesenberry, C. P., Manly, J. J., Gilsanz, P.
2023
- **Mother's education and late-life disparities in memory and dementia risk among US military veterans and non-veterans** *JOURNAL OF EPIDEMIOLOGY AND COMMUNITY HEALTH*
Vable, A. M., Eng, C. W., Mayeda, E., Basu, S., Marden, J. R., Hamad, R., Glymour, M.
2018; 72 (12): 1162-1167
- **Mother's education and late-life disparities in memory and dementia risk among US military veterans and non-veterans.** *Journal of epidemiology and community health*
Vable, A. M., Eng, C. W., Mayeda, E. R., Basu, S., Marden, J. R., Hamad, R., Glymour, M. M.
2018