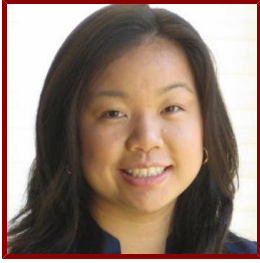


Stanford



Margaret Jane Wong

- Affiliate, Dean's Office Operations - Dean Other
- Resident in Radiology

Bio

HONORS AND AWARDS

- Moskowitz Research Award, Stanford Radiology (2018)
- Research Scholar Award, ACR AUR (2018)
- Small Business Technology Transfer Grant STTR Phase 2, NIH (2017)
- Medical Student Research Grant, RSNA (2013)
- Graduated from MIT with a 5.0/5.0 GPA, MIT (2004)
- Eta Kappa Nu Honor Society for Electrical Engineering and Computer Science, MIT (2002)

BOARDS, ADVISORY COMMITTEES, PROFESSIONAL ORGANIZATIONS

- Residents and Fellows Section Committee Member, Society of Breast Imaging (2018 - present)
- Member, Association of University Radiologists (2017 - present)
- Member, Society of Abdominal Radiology (2014 - present)
- Member, American Roentgen Ray Society (2014 - present)
- Member, Radiological Society of North America (2013 - present)
- Undergraduate Admissions Interviewer, Los Angeles Vice Chair (2009-2010), MIT Alumni Association National Volunteer Honor Roll (2005-2006), MIT Alumni Association (2004 - present)

PROFESSIONAL EDUCATION

- Residency, Stanford , Radiology (2020)
- Internship, Santa Clara Valley Medical Center , Medicine (2016)
- M.D., UCSF , Medicine (2015)
- Master of Engineering (M.Eng), MIT , Electrical Engineering and Computer Science (2004)
- B.S., MIT , Electrical Engineering and Computer Science (2004)

Publications

PUBLICATIONS

- **Ileocolic vascular curvature: a new CT finding of cecal volvulus.** *Abdominal radiology (New York)*
Wong, M., Brooke Jeffrey, R., Rucker, A. N., Olcott, E. W.
2020
- **Pyogenic Hepatic Abscess.**
Wong, M. J., Olcott, E. W., Jeffrey, R. B., Chong, K. C.

ACR Case in Point..
2019

- **Massive Intrathoracic Bezoar**

Wong, M. J., Mabud, T. S., Federle, M. P., Chong, K. C.
ACR Case in Point..
2018

- **Opportunities for new CT contrast agents to maximize the diagnostic potential of emerging spectral CT technologies.** *Advanced drug delivery reviews*

Yeh, B. M., Fitzgerald, P. F., Edic, P. M., Lambert, J. W., Colborn, R. E., Marino, M. E., Evans, P. M., Roberts, J. C., Wang, Z. J., Wong, M. J., Bonitatibus, P. J.
2016

- **Risk of contrast-induced nephropathy for patients receiving intravenous vs. intra-arterial iodixanol administration** *ABDOMINAL RADIOLOGY*

Tong, G. E., Kumar, S., Chong, K. C., Shah, N., Wong, M. J., Zimmet, J. M., Wang, Z. J., Yee, J., Fu, Y., Yeh, B. M.
2016; 41 (1): 91-99

PRESENTATIONS

- Splenic Infarcts and Ovarian Vein Thromboses: A Rare Presentation of Mantle Cell Lymphoma - Society of General Internal Medicine
- A Curious Case of Situs Inversus - American College of Physicians
- Beyond Black and White: Color Enhanced Multi-Material Decomposition of Complementary Contrast at DECT - American Roentgen Ray Society Annual Meeting 2014
- Color Enhanced Three-Material Decomposition of Complementary Contrast at DECT - Society of Abdominal Radiology Annual Meeting 2014
- Is the risk for contrast-induced nephropathy lower for high-risk patients receiving intravenous iodixanol administration compared to low and high risk patients receiving intra-arterial iodixanol? - American Roentgen Ray Society Annual Meeting 2014
- Dynamic contrast-enhanced CT quantification of fractional extracellular space correlates with pulmonary fibrosis severity in a bleomycin mouse model - RSNA Scientific Assembly and Annual Meeting 2013
- Comparison of Bismuth, Tungsten, and Tantalum Enteric Contrast Agents to Complement Iodine for Double Contrast Dual-energy CT Enterography - RSNA Scientific Assembly and Annual Meeting 2013