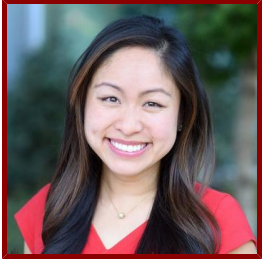


# Stanford

---



## Paula Tran

Clinical Associate Professor, Psychiatry and Behavioral Sciences - Child & Adolescent Psychiatry and Child Development

### CLINICAL OFFICE (PRIMARY)

- **Psychiatry**

401 Quarry Rd Ste 2114

MC 5723

Stanford, CA 94305

**Tel** (650) 725-5591      **Fax** (650) 724-7389

### Bio

---

#### CLINICAL FOCUS

- Child and Adolescent Psychiatry
- Medical-Psychiatric Conditions
- Neuropsychiatric Disorders
- Inflammatory Brain Disease

#### ACADEMIC APPOINTMENTS

- Clinical Associate Professor, Psychiatry and Behavioral Sciences - Child & Adolescent Psychiatry and Child Development

#### ADMINISTRATIVE APPOINTMENTS

- Associate Medical Director, LPCH Pediatric Psychiatry Consultation-Liaison Service, (2024- present)
- Assistant Program Director, Stanford Child and Adolescent Psychiatry Fellowship Training Program, (2022- present)
- Clerkship Director, PSYC 326A, (2021- present)

#### PROFESSIONAL EDUCATION

- Residency: UCSF Dept of Psychiatry (2015) CA
- Medical Education: University of California San Diego School of Medicine (2011) CA
- Board Certification: Child and Adolescent Psychiatry, American Board of Psychiatry and Neurology (2017)
- Fellowship: Stanford University Child and Adolescent Psychiatry Fellowship (2017) CA
- Board Certification: Psychiatry, American Board of Psychiatry and Neurology (2016)

### Publications

---

#### PUBLICATIONS

- **Prevalence of Neurological Soft Signs at Presentation in Pediatric Acute-Onset Neuropsychiatric Syndrome.** *medRxiv : the preprint server for health sciences*  
Zebrack, J. E., Gao, J., Verhey, B., Tian, L., Stave, C., Farhadian, B., Ma, M., Silverman, M., Xie, Y., Tran, P., Thienemann, M., Wilson, J. L., Frankovich, et al

2024

- **Development of Autoimmune Diseases Among Children With Pediatric Acute-Onset Neuropsychiatric Syndrome** *JAMA network open*  
Ma, M., Masterson, E. E., Gao, J., Karpel, H., Chan, A., Pooni, R., Sandberg, J., Rubesova, E., Farhadian, B., Willet, T., Xie, Y., Tran, P., Silverman, et al  
2024; 7 (7)
- **Sex and Aggression Characteristics in a Cohort of Patients with Pediatric Acute-Onset Neuropsychiatric Syndrome.** *Journal of child and adolescent psychopharmacology*  
Gao, J., Chan, A., Willett, T., Farhadian, B., Silverman, M., Tran, P., Ahmed, S., Thienemann, M., Frankovich, J.  
2022
- **Children With PANS May Manifest POTS.** *Frontiers in neurology*  
Chan, A., Gao, J., Houston, M., Willett, T., Farhadian, B., Silverman, M., Tran, P., Jaradeh, S., Thienemann, M., Frankovich, J.  
2022; 13: 819636
- **Pediatric Delirium in the Palliative Care Setting** *Interdisciplinary Pediatric Palliative Care*  
Tran, P., Moss, J., Koh, E., Ort, K., Shaw, R. J., Goldsmith, M.  
2021; 2nd: 264–281
- **Chronic Fatigue Symptoms in Children with Abrupt Early-onset OCD And/or PANS**  
Chan, A., Truong, A., Farhadian, B., Willett, T., Silverman, M., Tran, P., Thienemann, M., Frankovich, J.  
WILEY.2020: 252–54
- **Familial Clustering of Immune-mediated Diseases in Children with Abrupt-onset OCD**  
Chan, A., Phu, T., Farhadian, B., Willett, T., Silverman, M., Tran, P., Thienemann, M., Frankovich, J.  
WILEY.2020: 250–52
- **Current Pharmacological Treatments for Childhood-Onset Somatic Symptom and Related Disorders (SSRD) and Functional Gastrointestinal Disorders (FGID)** *Current Treatment Options in Psychiatry*  
Crawford, J., Tran, P., Shaw, J. S., Shaw, R. J.  
2020; 7: 120–143
- **Pediatric Inflammatory Brain Disease** *Complex Disorders in Pediatric Psychiatry*  
Tran, P., Frankovich, J., Van Mater, H., Dale, R. C., Or-Geva, N., McHugh, A., Thienemann, M.  
2018: 169-188