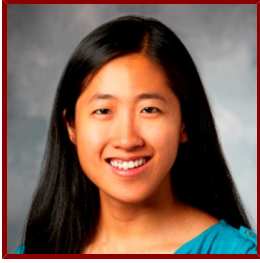


Stanford



Chiu-Yu Chen

Clinical Assistant Professor, Pediatrics - Cardiology

CLINICAL OFFICES

- **Pediatric Cardiology**

725 Welch Rd

Palo Alto, CA 94304

Tel (650) 723-7914

Fax (650) 725-8343

Bio

CLINICAL FOCUS

- Pediatric Cardiology

ACADEMIC APPOINTMENTS

- Clinical Assistant Professor, Pediatrics - Cardiology

PROFESSIONAL EDUCATION

- Fellowship: Stanford University Pediatric Cardiology Fellowship (2020) CA
- Board Certification: Pediatric Cardiology, American Board of Pediatrics (2018)
- Fellowship: Stanford University Pediatric Cardiology Fellowship (2018) CA
- Board Certification: Pediatrics, American Board of Pediatrics (2014)
- Residency: University of Washington Pediatric Residency (2014) WA
- Medical Education: Perelman School of Medicine University of Pennsylvania (2011) PA
- Fellowship, Stanford University , Pediatric Cardiology (2018)
- Residency, University of Washington , Pediatrics (2014)
- PhD, University of Pennsylvania , Bioengineering (2011)
- MD, University of Pennsylvania Perelman School of Medicine (2011)

Publications

PUBLICATIONS

- **Hemodynamic Predictors of Renal Function After Pediatric Left Ventricular Assist Device Implantation.** *ASAIO journal (American Society for Artificial Internal Organs : 1992)*
Chen, C. Y., Montez-Rath, M. E., May, L. J., Maeda, K., Hollander, S. A., Rosenthal, D. N., Krawczeski, C. D., Sutherland, S. M.
2021; 67 (12): 1335-1341
- **The Stanford acute heart failure symptom score for patients hospitalized with heart failure.** *The Journal of heart and lung transplantation : the official publication of the International Society for Heart Transplantation*

Almond, C. S., Chen, S., Dykes, J. C., Kwong, J., Burstein, D. S., Rosenthal, D. N., Kipps, A. K., Teuteberg, J., Murray, J. M., Kaufman, B. D., Hollander, S. A., Profita, E., Yarlagadda, et al

2020

- **Donor heart selection during the COVID-19 pandemic: A case study** *JOURNAL OF HEART AND LUNG TRANSPLANTATION*
Chen, C., Chen, S. F., Hollander, S. A., Rosenthal, D., Maeda, K., Burgart, A., Almond, C. S., Chen, S.
2020; 39 (5): 497–98
- **RECENT TRENDS IN RIGHT HEART MECHANICAL SUPPORT STRATEGIES IN CHILDREN REQUIRING LVAD SUPPORT**
Dykes, J., Ahmed, H., Power, A., Murray, J., Chen, C., Chen, S., Rosenthal, D. N., Maeda, K., Almond, C.
ELSEVIER SCIENCE INC.2020: 1052
- **Donor heart selection during the COVID-19 pandemic: A case study.** *The Journal of heart and lung transplantation : the official publication of the International Society for Heart Transplantation*
Chen, C. Y., Chen, S. F., Hollander, S. A., Rosenthal, D. n., Maeda, K. n., Burgart, A. n., Almond, C. S., Chen, S. n.
2020; 39 (5): 497–98
- **Donor-specific anti-HLA antibody production following pediatric ABO-incompatible heart transplantation** *PEDIATRIC TRANSPLANTATION*
Chen, C., Warner, P., Albers, E. L., Kemna, M. S., Delaney, M., Hong, B. J., Law, Y. M.
2019; 23 (2)
- **Blood flow reprograms lymphatic vessels to blood vessels** *JOURNAL OF CLINICAL INVESTIGATION*
Chen, C., Bertozzi, C., Zou, Z., Yuan, L., Lee, J. S., Lu, M., Stachelek, S. J., Srinivasan, S., Guo, L., Vincente, A., Mericko, P., Levy, R. J., Makinen, et al
2012; 122 (6): 2006–17
- **Platelets regulate lymphatic vascular development through CLEC-2-SLP-76 signaling** *BLOOD*
Bertozzi, C. C., Schmaier, A. A., Mericko, P., Hess, P. R., Zou, Z., Chen, M., Chen, C., Xu, B., Lu, M., Zhou, D., Sebzda, E., Santore, M. T., Merianos, et al
2010; 116 (4): 661–70
- **Engineering of fiber-reinforced tissues with anisotropic biodegradable nanofibrous scaffolds.** *Conference proceedings : ... Annual International Conference of the IEEE Engineering in Medicine and Biology Society. IEEE Engineering in Medicine and Biology Society. Annual Conference*
Nerurkar, N. L., Baker, B. M., Chen, C., Elliott, D. M., Mauck, R. L.
2006; 1: 787–90