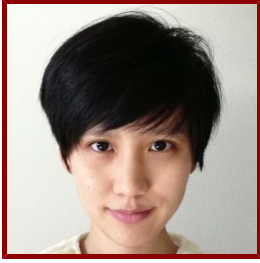


Stanford



Jane P. Kim

Clinical Assistant Professor, Psychiatry and Behavioral Sciences

Bio

ACADEMIC APPOINTMENTS

- Clinical Assistant Professor, Psychiatry and Behavioral Sciences

HONORS AND AWARDS

- Learning Health Innovation Pilot Grant, Stanford Center for Clinical and Translational Education and Research (2017)
- Small Grant Award, Department of Psychiatry and Behavioral Sciences (2016)

PROFESSIONAL EDUCATION

- B.A., Columbia University (2004)
- A.M., Harvard University , Statistics (2005)
- Ph.D., Columbia University , Statistics (2009)

Research & Scholarship

CURRENT RESEARCH AND SCHOLARLY INTERESTS

I am interested in the application of statistical methods to improve public mental health. My areas of expertise are the robustness of regression-based inference in randomized or non-randomized studies, methods for analyzing survival data subject to non-standard sampling schemes, and spatial statistics.

Teaching

COURSES

2018-19

- Methodology of Research in Behavioral Sciences: PSYC 250 (Sum)

Publications

PUBLICATIONS

- **Demonstrating Patterns in the Views Of Stakeholders Regarding Ethically-Salient Issues in Clinical Research: A Novel Use of Graphical Models in Empirical Ethics Inquiry.** *AJOB empirical bioethics*
Kim, J. P., Roberts, L. W.
; 6 (2): 33–42
- **The Utility and Acceptability of a Self-Help Smartphone Application for Eating Disorder Behaviors.** *Journal of technology in behavioral science*
Kim, J. P., Sadeh-Sharvit, S., Darcy, A. M., Neri, E., Vierhile, M., Robinson, A., Tregarthen, J., Lock, J. D.
2018; 3 (3): 161–64

- **Subgrouping the users of a specialized app for eating disorders.** *Eating disorders*
Sadeh-Sharvit, S., Kim, J. P., Darcy, A. M., Neri, E., Vierhile, M., Robinson, A., Tregarthen, J., Lock, J. D.
2018; 1–12
- **Accelerated failure time model under general biased sampling scheme** *BIOSTATISTICS*
Kim, J. P., Sit, T., Ying, Z.
2016; 17 (3): 576-588
- **Rejoinder to "A Note on Using Regression Models to Analyze Randomized Trials: Asymptotically Valid Hypothesis Tests Despite Incorrectly Specified Models"** *BIOMETRICS*
Kim, J. P.
2013; 69 (1)
- **A Unified Approach to Semiparametric Transformation Models Under General Biased Sampling Schemes** *JOURNAL OF THE AMERICAN STATISTICAL ASSOCIATION*
Kim, J. P., Lu, W., Sit, T., Ying, Z.
2013; 108 (501): 217-227
- **Validation of Reported Predialysis Nephrology Care of Older Patients Initiating Dialysis** *JOURNAL OF THE AMERICAN SOCIETY OF NEPHROLOGY*
Kim, J. P., Desai, M., Chertow, G. M., Winkelmayr, W. C.
2012; 23 (6): 1078-1085
- **A composite likelihood approach for spatially correlated survival data** *Computational Statistics and Data Analysis*
Paik J, Ying Z
2012; 56 (1): 209-216
- **Views of the importance of psychiatric genetic research by potential volunteers from stakeholder groups.** *Journal of psychiatric research*
Roberts, L. W., Tsungmeyer, T., Kim, J. P., Hantke, M.
2018; 106: 69–73
- **Perspectives of psychiatric investigators and IRB chairs regarding benefits of psychiatric genetics research.** *Journal of psychiatric research*
Roberts, L. W., Dunn, L. B., Kim, J. P., Rostami, M.
2018; 106: 54–60
- **Does informed consent given by healthy individuals when enrolling in clinical research feel less voluntary than for ill individuals?** *Journal of psychiatric research*
Roberts, L., Kim, J. P.
2018; 103: 33–37
- **The Transition to Precision Psychiatry and Pragmatic Inquiry Methods in Academic Psychiatry: The Example of Point-of-Care Clinical Trials.** *Academic psychiatry : the journal of the American Association of Directors of Psychiatric Residency Training and the Association for Academic Psychiatry*
Kim, J. P., Roberts, L. W.
2017
- **Lifetime anxiety disorder and current anxiety symptoms associated with hastened depressive recurrence in bipolar disorder.** *Journal of affective disorders*
Shah, S., Kim, J. P., Park, D. Y., Kim, H., Yuen, L. D., Do, D., Dell'Osso, B., Hooshmand, F., Miller, S., Wang, P. W., Ketter, T. A.
2017; 219: 165-171
- **Healthy individuals' perspectives on clinical research protocols and influences on enrollment decisions** *AJOB Empirical Bioethics*
Roberts, L. W., Kim, J. P.
2017; 8 (2): 89-98
- **Perceptions of the Professional Development Value of Honorary Fellowship Award Experiences.** *Academic psychiatry*
Roberts, L. W., Kim, J. P., Samuels, C., Winstead, D.
2016; 40 (5): 761-767
- **Are individuals living with mental illness and their preferred alternative decision-makers attuned and aligned in-their attitudes regarding treatment decisions?** *JOURNAL OF PSYCHIATRIC RESEARCH*
Roberts, L. W., Kim, J. P.
2016; 78: 42-47

- **Attunement and alignment of people with schizophrenia and their preferred alternative decision-makers: An exploratory pilot study comparing treatment and research decisions** *JOURNAL OF PSYCHIATRIC RESEARCH*
Roberts, L. W., Kim, J. P.
2015; 71: 70-77
- **Informal Health Care Practices of Residents: "Curbside" Consultation and Self-Diagnosis and Treatment** *ACADEMIC PSYCHIATRY*
Roberts, L. W., Kim, J. P.
2015; 39 (1): 22-30
- **Caring for patients takes time: dr. Peabody says so!** *Academic psychiatry*
Beresin, E. V., Balon, R., Coverdale, J. H., Louie, A. K., Kim, J. P., Roberts, L. W.
2015; 39 (1): 1-5
- **Giving voice to study volunteers: Comparing views of mentally ill, physically ill, and healthy protocol participants on ethical aspects of clinical research** *JOURNAL OF PSYCHIATRIC RESEARCH*
Roberts, L. W., Kim, J. P.
2014; 56: 90-97
- **Do investigators understand ethically-important perspectives of clinical research participants?: A 'piggy-back' study of attunement and alignment in serious illness research.** *Journal of psychiatric research*
Roberts, L. W., Kim, J. P.
2014; 52: 36-43
- **Moving Beyond Community Mental Health: Public Mental Health as an Emerging Focus for Psychiatry Residency Training.** *Academic psychiatry : the journal of the American Association of Directors of Psychiatric Residency Training and the Association for Academic Psychiatry*
Roberts, L. W., Beresin, E. V., Coverdale, J. H., Balon, R., Louie, A. K., Kim, J. P., Ohayon, M. M.
2014
- **Randomized Clinical Trial to Evaluate the Efficacy and Safety of Valganciclovir in a Subset of Patients With Chronic Fatigue Syndrome** *JOURNAL OF MEDICAL VIROLOGY*
Montoya, J. G., Kogelnik, A. M., Bhargoo, M., Lunn, M. R., Flamand, L., Merrihew, L. E., Watt, T., Kubo, J. T., Paik, J., Desai, M.
2013; 85 (12): 2101-2109
- **Real-Time Optical Biopsy of Colon Polyps With Narrow Band Imaging in Community Practice Does Not Yet Meet Key Thresholds for Clinical Decisions** *GASTROENTEROLOGY*
Ladabaum, U., Fioritto, A., Mitani, A., Desai, M., Kim, J. P., Rex, D. K., Imperiale, T., Gunaratnam, N.
2013; 144 (1): 81-91
- **Donor Recipient Sex Mismatch in Kidney Transplantation** *GENDER MEDICINE*
Tan, J. C., Kim, J. P., Chertow, G. M., Grumet, F. C., Desai, M.
2012; 9 (5): 335-347
- **The diagnostic yield of CT-guided percutaneous lung biopsy in solid organ transplant recipients** *CLINICAL TRANSPLANTATION*
Hsu, J. L., Kushner, W. G., Paik, J., Bower, N., Guillamet, M. C., Kothary, N.
2012; 26 (4): 615-621
- **Trends in Acute Nonvariceal Upper Gastrointestinal Bleeding in Dialysis Patients** *JOURNAL OF THE AMERICAN SOCIETY OF NEPHROLOGY*
Yang, J., Lee, T., Montez-Rath, M. E., Paik, J., Chertow, G. M., Desai, M., Winkelmayer, W. C.
2012; 23 (3): 495-506
- **Validity of Surrogate Measures for Functional Nephron Mass** *TRANSPLANTATION*
Tan, J. C., Paik, J., Chertow, G. M., Grumet, F. C., Busque, S., Lapasia, J., Desai, M.
2011; 92 (12): 1335-1341
- **Intradialytic Hypotension and Vascular Access Thrombosis** *JOURNAL OF THE AMERICAN SOCIETY OF NEPHROLOGY*
Chang, T. I., Paik, J., Greene, T., Desai, M., Bech, F., Cheung, A. K., Chertow, G. M.
2011; 22 (8): 1526-1533
- **Epidemiologic trends in penile anomalies and hypospadias in the state of California, 1985-2006** *JOURNAL OF PEDIATRIC UROLOGY*
Elliott, C. S., Halpern, M. S., Paik, J., Maldonado, Y., Shortliffe, L. D.

2011; 7 (3): 294-298

● **Updated comorbidity assessments and outcomes in prevalent hemodialysis patients** *HEMODIALYSIS INTERNATIONAL*

Chang, T. I., Paik, J., Greene, T., Miskulin, D. C., Chertow, G. M.

2010; 14 (4): 478-485