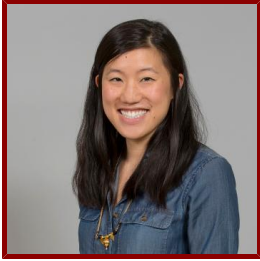


Stanford



Olivia Jee

Clinical Assistant Professor, Medicine - Primary Care and Population Health

CLINICAL OFFICE (PRIMARY)

- **Stanford Health Center at Los Altos**

960 N San Antonio Rd Ste 101

Los Altos, CA 94022

Tel (650) 498-9000 Fax (650) 736-6353

Bio

CLINICAL FOCUS

- Family Medicine

ACADEMIC APPOINTMENTS

- Clinical Assistant Professor, Medicine - Primary Care and Population Health

BOARDS, ADVISORY COMMITTEES, PROFESSIONAL ORGANIZATIONS

- Diplomat, American Board of Family Medicine (2015 - present)
- Member, California American Academy of Family Physicians (2012 - present)
- Member, American Academy of Family Physicians (2012 - present)

PROFESSIONAL EDUCATION

- Board Certification: Family Medicine, American Board of Family Medicine (2015)
- Residency: O'Connor Hospital (2015) CA
- Internship: O'Connor Hospital (2013) CA
- Fellowship, University of Arizona , Program in Integrative Medicine (2015)
- Medical Education, Rosalind Franklin University of Medicine and Science , Chicago Medical School (2012)
- Bachelors of Arts, Carleton College , Chemistry (2008)

Publications

PUBLICATIONS

- **Asking the Right Questions: Benchmarking Large Language Models in the Development of Clinical Consultation Templates.** *Pacific Symposium on Biocomputing. Pacific Symposium on Biocomputing*
McCoy, L. G., Wu, D., Khemani, S., Maharaj, S. K., Pahwa, A., Rosengaus, L., Giang, L., Jee, O., Goh, E., Haredasht, F. N., Chopra, K., Wu, D. J., Conteh, et al
2026; 31: 400-416

- **Automated Evaluation of Large Language Model Response Concordance with Human Specialist Responses on Physician-to-Physician eConsult Cases.** *Pacific Symposium on Biocomputing. Pacific Symposium on Biocomputing*
Wu, D. J., Haredasht, F. N., Wu, D., Ravi, V., McCoy, L. G., Weng, Y., Chopra, K., Everett, S. S., Nageeb, G., Chen, W., Ma, S. P., Maharaj, S. K., Tran, et al
2026; 31: 372-387
- **Asking the Right Questions: Benchmarking Large Language Models in the Development of Clinical Consultation Templates** *Pacific Symposium of Biocomputing*
Liam, M. G., David, W., Sarita, K., Saloni, M. K., et al
2026: 400-416
- **Right Patient, Right Specialist, Right Time: Retrieval Augmented Generation for Specialty Referral Routing.** *AMIA ... Annual Symposium proceedings. AMIA Symposium*
Haredasht, F. N., Goh, E., Ravi, V., Ashtari, P., Jiang, Y., Yuldashev, N., Grolleau, F., Gallo, R. J., Shah, A., Hur, E., Chopra, K., Jee, O., Lee, et al
2024; 2024: 443-450
- **Graph-based clinical recommender: Predicting specialists procedure orders using graph representation learning.** *Journal of biomedical informatics*
Fouladvand, S., Gomez, F. R., Nilforooshan, H., Schwede, M., Noshad, M., Jee, O., You, J., Sosic, R., Leskovec, J., Chen, J.
2023: 104407
- **Transforming Interprofessional Roles During Virtual Health Care: The Evolving Role of the Medical Assistant, in Relationship to National Health Profession Competency Standards.** *Journal of primary care & community health*
Rokicki-Parashar, J., Phadke, A., Brown-Johnson, C., Jee, O., Sattler, A., Torres, E., Srinivasan, M.
2021; 12: 21501327211004285
- **Qualitative Assessment of Rapid System Transformation to Primary Care Video Visits at an Academic Medical Center.** *Annals of internal medicine*
Srinivasan, M. n., Asch, S. n., Vilendrer, S. n., Thomas, S. C., Bajra, R. n., Barman, L. n., Edwards, L. M., Filipowicz, H. n., Giang, L. n., Jee, O. n., Mahoney, M. n., Nelligan, I. n., Phadke, et al
2020