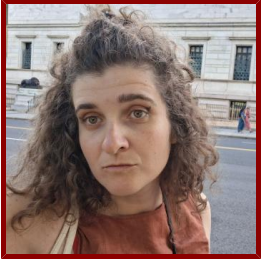


Stanford



Esther Bartl

Affiliate, Medicine - Primary Care and Population Health

Bio

BIO

I am a Postdoctoral Researcher in the lab of Pascal Geldsetzer affiliated with the Stanford University School of Medicine and the Heidelberg Institute of Global Health. My research examines questions at the intersection of health policy, epidemiology, and applied econometrics, with a focus on causal inference in large-scale health datasets.