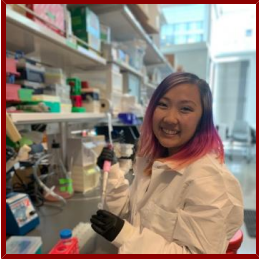


Stanford



Michelle Ozaki

Postdoctoral Scholar, Genetics

Bio

HONORS AND AWARDS

- F99/K00 Predoctoral to Postdoctoral Transition Award, NCI (2023-2029)
- Graduate Research Fellowship Program, NSF (2020-2023)

PROFESSIONAL EDUCATION

- Doctor of Philosophy, Oregon Health Sciences University (2025)
- Ph.D., Oregon Health & Science University , Cancer Biology (2025)

STANFORD ADVISORS

- Monte Winslow, Postdoctoral Faculty Sponsor

Research & Scholarship

CURRENT RESEARCH AND SCHOLARLY INTERESTS

Research interests include tumor microenvironment interactions, stromal and tumor cell interactions, and how stromal cells impact metastasis.

Publications

PUBLICATIONS

- **Reproductive state controls transcription in the murine liver, with implications for breast cancer liver metastasis** *PROCEEDINGS OF THE NATIONAL ACADEMY OF SCIENCES OF THE UNITED STATES OF AMERICA*
Ozaki, M. K., Zhang, Y., Bartlett, A. Q., de Wilde, E., Guan, X., Yang, A., Xia, Z., Schedin, P.
2025; 122 (24): e2420174122