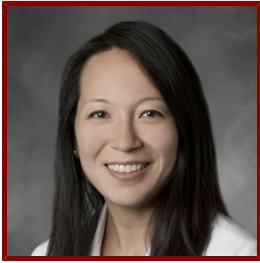


# Stanford

---



## Cindy Kin, MD, MS, FACS, FASCRS, DipABLM

Associate Professor of Surgery (General Surgery)  
Surgery - General Surgery

### CLINICAL OFFICE (PRIMARY)

- **Stanford Clinical Cancer Center**  
875 Blake Wilbur Dr Clinic B  
MC 6560  
Palo Alto, CA 94305  
Tel (650) 498-6000      Fax (650) 723-8748

### ACADEMIC CONTACT INFORMATION

- **Clinical Contact: Patient Questions and Appointments**  
Roxanne Jezyk, RN - Nurse Coordinator  
Tel 650-498-6000

### Bio

---

#### CLINICAL FOCUS

- Cancer > GI Oncology
- Colon and Rectal Surgery Specialty
- Colorectal Surgery
- General Surgery
- Colon Cancer
- Rectal Cancer
- Inflammatory Bowel Diseases
- Crohn's Disease
- Ulcerative Colitis
- Anorectal Disease
- Minimally Invasive Surgical Procedures
- Laparoscopic Surgery
- Colonoscopy
- Diverticulitis

#### ACADEMIC APPOINTMENTS

- Associate Professor - University Medical Line, Surgery - General Surgery
- Member, Wu Tsai Human Performance Alliance

#### PROFESSIONAL EDUCATION

- Fellowship: Cleveland Clinic Foundation (2012) OH
- Residency: Stanford University Dept of General Surgery (2011) CA

- Board Certification, American Board of Lifestyle Medicine , Lifestyle Medicine (2020)
- Board Certification: Colon and Rectal Surgery, American Board of Colon and Rectal Surgery (2013)
- Board Certification: General Surgery, American Board of Surgery (2011)
- Fellowship, Cleveland Clinic, OH , Colon and Rectal Surgery (2012)
- MS, Stanford University , Health Services Research (2015)
- MD, Columbia University , Medicine (2006)
- BA, Harvard University , Government (2000)

## LINKS

- Get a Second Opinion: <https://stanfordhealthcare.org/second-opinion/overview.html>

## Research & Scholarship

---

### CLINICAL TRIALS

- Effect of Preoperative Diet on Perioperative Gut Microbiome, Recruiting
- Early Removal of Urinary Catheters in Patients After Rectal Surgery: a Prospective Study, Not Recruiting
- Effect of Prehabilitation on Surgical Outcomes of Abdominally-based Plastic Surgery Procedures, Not Recruiting
- Immune Modulation by Enhanced vs Standard Prehabilitation Program Before Major Surgery, Not Recruiting
- Perioperative Optimization With Enhanced Recovery, Not Recruiting
- Rosuvastatin in Treating Patients With Stage I or Stage II Colon Cancer That Was Removed By Surgery, Not Recruiting
- Introducing a Plant-Based Diet for Patients With Colorectal Diseases, Not Specified

## Teaching

---

### GRADUATE AND FELLOWSHIP PROGRAM AFFILIATIONS

- Community Health and Prevention Research (Masters Program)
- Health Services Research (Masters Program)

## Publications

---

### PUBLICATIONS

- **Immune Modulation by Personalized vs Standard Prehabilitation Before Major Surgery: A Randomized Clinical Trial.** *JAMA surgery*  
Cambriel, A., Tsai, A., Choisy, B., Sabayev, M., Hedou, J., Shelton, E., Singh, K., Amar, J., Badea, V., Bruckman, S., Ganio, E., Einhaus, J., Feyaerts, et al  
2025
- **Defining and Achieving High-Quality Colon Cancer Surgery.** *Clinics in colon and rectal surgery*  
Morris, A. M., Kin, C. J.  
2025; 38 (5): 354-358
- **Improving colorectal cancer screening in patients with comorbidities requires personalised patient education: an invited commentary.** *Evidence-based nursing*  
Ko, B., Kin, C.  
2025
- **Venous Thromboembolism Prophylaxis Practice Patterns, Outcomes, and Risk Stratification after Surgery for Inflammatory Bowel Disease: A National Surgical Quality Improvement Program IBD Collaborative Study.** *Diseases of the colon and rectum*  
Holubar, S. D., Eisenstein, S., Bordeianou, L., Chapman, W., Crowell, K., Davids, J. S., Hrabe, J., Justiniano, C., Kapadia, M. R., Kin, C., Krane, M., Lee, E., Olortegui, et al

2025

- **Immune Modulation by Personalized vs Standard Prehabilitation Program Before Major Surgery**  
Cambriel, A., Tsai, A., Sabayev, M., Choisy, B., Hedou, J., Shelton, E., Singh, K., Amar, J., Badea, V., Bruckman, S., Ganio, E., Einhaus, J., Feyaerts, et al  
LIPPINCOTT WILLIAMS & WILKINS.2025: 959
- **Phase II trial of organ preservation program using short-course radiation and FOLFOXIRI for rectal cancer (SHORT-FOX): Two-Year primary outcome analysis.** *Radiotherapy and oncology : journal of the European Society for Therapeutic Radiology and Oncology*  
Klebaner, D., Brown, E., Fisher, G. A., Shelton, A., Johnson, T. P., Shaheen, S., Chen, C., Heestand, G., Holden, T., Bien, J., King, D. A., Dawes, A. J., Morris, et al  
2025; 207: 110884
- **Evaluating a digital prehabilitation tool in patients with colorectal surgery: protocol for a multisite randomised controlled trial.** *BMJ open*  
Ogomori, K., Broering, J., Rogine, C., Kin, C., Chang, G. J., Finlayson, E.  
2025; 15 (2): e088001
- **Defining and Achieving High-Quality Colon Cancer Surgery** *CLINICS IN COLON AND RECTAL SURGERY*  
Morris, A. M., Kin, C. J.  
2024
- **Physiologic readiness and subjective workload of performing operations: A prospective observational study of attending and trainee surgeons.** *American journal of surgery*  
Perrone, K., Earley, M., Rosenberg, G., Pugh, C., Kin, C.  
2024; 241: 116175
- **No thanks and not for me: A qualitative study of barriers to prehabilitation participation.** *Surgery*  
Clemons, J., Zhou, Z., Hoy, S. A., Gerber, S. Q., Nambiar, A., Kwon, A., Kin, C.  
2024
- **Gastrointestinal Surgical Patient and Multidisciplinary Healthcare Provider Beliefs and Practices Around Perioperative Nutrition: A Mixed-Methods Study.** *The Journal of surgical research*  
Arbaugh, C., Kimura, C., Kin, C.  
2024; 302: 80-91
- **Phase II trial of organ preservation program using short-course radiation and FOLFOXIRI for rectal cancer (SHORT-FOX).**  
Pollom, E. L., Fisher, G. A., Shelton, A., Johnson, T., Chen, C., Jackson, S., Shaheen, S., Holden, T., Bien, J., King, D., Morris, A. M., Kin, C., Dawes, et al  
LIPPINCOTT WILLIAMS & WILKINS.2024
- **Society for Surgery of the Alimentary Tract State-of-the-Art Session 2022: Frailty in Surgery.** *Journal of gastrointestinal surgery : official journal of the Society for Surgery of the Alimentary Tract*  
Keller, D. S., Kimura, C. M., Kin, C. J., Chu, D. I., Smith, B. P., Dhala, A., Arrington, A. K., Clark, C. J., Winslow, E. R., Al-Refaie, W. B., Khaitan, P. G.  
2024; 28 (2): 158-163
- **GITR and TIGIT immunotherapy provokes divergent multicellular responses in the tumor microenvironment of gastrointestinal cancers.** *Genome medicine*  
Sathe, A., Ayala, C., Bai, X., Grimes, S. M., Lee, B., Kin, C., Shelton, A., Poultides, G., Ji, H. P.  
2023; 15 (1): 100
- **Remote Telemonitoring with a Human Touch: a Promising Addition to Post-discharge Care for Surgical Patients.** *World journal of surgery*  
Zhou, Z., Kin, C.  
2023
- **Impact of preoperative uni- or multimodal prehabilitation on postoperative morbidity: meta-analysis.** *BJS open*  
Cambriel, A., Choisy, B., Hedou, J., Bonnet, M., Fellous, S., Lefevre, J. H., Voron, T., Gaudilliere, D., Kin, C., Gaudilliere, B., Verdonk, F.  
2023; 7 (6)
- **Barriers and Facilitators of Surgical Prehabilitation Adherence from the Patient Perspective: a Mixed Method Study.** *Journal of gastrointestinal surgery : official journal of the Society for Surgery of the Alimentary Tract*  
Kimura, C., Liu, Y., Crowder, S. E., Arbaugh, C., Mai, U., Shankar, K., Shelton, A., Visser, B., Kin, C.

2023

- **Impact of Preoperative Uni- or Multimodal Prehabilitation on Postoperative Morbidity: A Systematic Review and Meta-Analysis**  
Verdonk, F., Choisy, B., Cambriel, A., Hedou, J., Bonnet, M., Lefevre, J., Voron, T., Gaudilliere, D., Kin, C., Gaudilliere, B.  
LIPPINCOTT WILLIAMS & WILKINS.2023: 806-807
- **GITR and TIGIT immunotherapy provokes divergent multi-cellular responses in the tumor microenvironment of gastrointestinal cancers.** *bioRxiv : the preprint server for biology*  
Sathe, A., Ayala, C., Bai, X., Grimes, S. M., Lee, B., Kin, C., Shelton, A., Poultsides, G., Ji, H. P.  
2023
- **Using AI and computer vision to analyze technical proficiency in robotic surgery.** *Surgical endoscopy*  
Yang, J. H., Goodman, E. D., Dawes, A. J., Gahagan, J. V., Esquivel, M. M., Liebert, C. A., Kin, C., Yeung, S., Gurland, B. H.  
2022
- **Is It Really Gone? Assessing Response to Neoadjuvant Therapy in Rectal Cancer.** *Journal of gastrointestinal cancer*  
Kimura, C., Crowder, S. E., Kin, C.  
2022
- **Association of an Online Home-Based Prehabilitation Program With Outcomes After Colorectal Surgery.** *JAMA surgery*  
Kimura, C. S., Bidwell, S., Gurland, B., Morris, A., Shelton, A., Kin, C.  
2022
- **Augmented reality neuronavigation for en bloc resection of spinal column lesions.** *World neurosurgery*  
Tigchelaar, S. S., Medress, Z. A., Quon, J., Dang, P., Barbery, D., Bobrow, A., Kin, C., Louis, R., Desai, A.  
2022
- **Adherence to a Home-Based Prehabilitation Program for Patients Undergoing Colorectal Surgery.** *Journal of gastrointestinal surgery : official journal of the Society for Surgery of the Alimentary Tract*  
Kimura, C., Bidwell, S., Shankar, K., Shelton, E., Shelton, A., Kin, C.  
2022
- **Integrated single-cell and plasma proteomic modeling to predict surgical site complications, a prospective cohort study**  
Tsai, A. S., Hedou, J., Einhaus, J., Rumer, K., Verdonk, F., Stanley, N., Choisy, B., Ganio, E. A., Bonham, A., Jacobsen, D., Warrington, B., Gao, X., Tingle, et al  
LIPPINCOTT WILLIAMS & WILKINS.2022: 1204-1205
- **Multimodal, coached telehealth prehabilitation has high compliance and improves exercise and cognitive capacity prior to surgery: a pilot study**  
Choisy, B., Hedou, J., Verdonk, F., Gaudilliere, D., Tsai, A. S., Shankar, K., Sato, M., Einhaus, J., Ganio, E. A., Bonham, A., Warrington, B., Ahmad, S., Tingle, et al  
LIPPINCOTT WILLIAMS & WILKINS.2022: 415
- **Mitigating Bias in Postoperative Pain Management: a Critical Piece of the Opioid Puzzle.** *World journal of surgery*  
Kimura, C., Kin, C.  
2022
- **Phase II trial of organ preservation program using short-course radiation and folfoxiri for rectal cancer (SHORT-FOX)**  
Pollom, E. L., Shelton, A., Fisher, G. A., Bien, J., King, D., Johnson, T., Chen, C., Shaheen, S., Chong, C., Vitzthum, L., Kirilcuk, N., Morris, A. M., Kin, et al  
LIPPINCOTT WILLIAMS & WILKINS.2022
- **Association of Prehabilitation With Postoperative Opioid Use in Colorectal Surgery: An Observational Cohort Study.** *The Journal of surgical research*  
Lee, A., Shelton, E., Bidwell, S., Shankar, K., Ando, K., Gaudilliere, B., Shelton, A., Kin, C.  
1800; 273: 226-232
- **Integrated Single-Cell and Plasma Proteomic Modeling to Predict Surgical Site Complications: A Prospective Cohort Study.** *Annals of surgery*  
Rumer, K. K., Hedou, J., Tsai, A., Einhaus, J., Verdonk, F., Stanley, N., Choisy, B., Ganio, E., Bonham, A., Jacobsen, D., Warrington, B., Gao, X., Tingle, et al

1800

- **Worse outcomes and higher costs of care in fibrostenotic Crohn's disease: a real-world propensity-matched analysis in the USA.** *BMJ open gastroenterology*  
Dehghan, M., Wong, G., Neuberger, E., Kin, C., Rieder, F., Park, K. T.  
1800; 8 (1)
- **Are You Really the Doctor? Physician Experiences with Gendered Microaggressions from Patients.** *Journal of women's health (2002)*  
Ahmad, S. R., Ahmad, T. R., Balasubramanian, V., Facente, S., Kin, C., Girod, S.  
2021
- **Engagement and Adherence with a Web-Based Prehabilitation Program for Patients Awaiting Abdominal Colorectal Surgery.** *Journal of gastrointestinal surgery : official journal of the Society for Surgery of the Alimentary Tract*  
Shelton, E., Barreto, N. B., Bidwell, S., Folk-Tolbert, M., Shelton, A., Trickey, A. W., Kin, C. J.  
2021
- **Cec and You Shall Find: Cecal Perforation in a Patient with COVID-19.** *Digestive diseases and sciences*  
Baiu, I., Forgo, E., Kin, C., Weiser, T. G.  
2021
- **Measuring the human immune response to surgery: multiomics for the prediction of postoperative outcomes.** *Current opinion in critical care*  
Verdonk, F., Einhaus, J., Tsai, A. S., Hedou, J., Choisy, B., Gaudilliere, D., Kin, C., Aghaeepour, N., Angst, M. S., Gaudilliere, B.  
2021
- **Opioid use among patients with pain syndromes commonly seeking surgical consultation: A retrospective cohort.** *Annals of medicine and surgery (2012)*  
Kin, C., Chou, L., Safer, D. L., Morris, A., Ding, Q., Trickey, A., Girod, S.  
2021; 69: 102704
- **A comparison of provider perspectives on cultural competency training: A mixed methods study.** *American journal of surgery*  
Liu, M. M., Miller, M. O., Merrell, S. B., Bruce, J. S., Kin, C., Morris, A. M.  
2020
- **A Deep Immune Profiling in Inflammatory Bowel Disease Reveals Disordered Immune Cell Frequencies Before and in Response to Major Abdominal Operations**  
Rumer, K., Stanley, N., Ganio, E., Tsai, E., Kin, C., Shelton, A. A., Morris, A. M., Angst, M., Aghaeepour, N., Gaudilliere, B.  
ELSEVIER SCIENCE INC.2020: S50
- **Fear and Trust: Driving Forces behind Patient Preferences, Needs, and Motivation for a Perioperative Optimization Program**  
Shelton, E., Shankar, K., Lee, A., Kadmon, T., Cvitanovic, M., Kin, C.  
ELSEVIER SCIENCE INC.2020: E17
- **Not in the Same Vein: Inflammatory Bowel Disease, Malignancy, and Enterocolic Lymphocytic Phlebitis.** *Digestive diseases and sciences*  
Farber, O. N., Weingarden, A., Lee, C., Braxton, D. R., Bingham, D., Scott, G., Fernandez-Becker, N., Goff, D., Shelton, A., Kin, C.  
2020
- **IMMUNE PROFILING TO PREDICT RECOVERY OUTCOMES AFTER SURGERY**  
Tsai, E. S., Rumer, K., Wong, K., Warrington, B., Shelton, E., Ganio, E., Verdonk, F., Ando, K., Tingle, M., Folk-Tolbert, M., Shankar, K., Shelton, A., Morris, et al  
LIPPINCOTT WILLIAMS & WILKINS.2020: 66–67
- **Implementation of a Synoptic Operative Report for Rectal Cancer: A Mixed-Methods Study.** *Diseases of the colon and rectum*  
Bidwell, S. S., Merrell, S. B., Poles, G. n., Morris, A. M.  
2020; 63 (2): 190–99
- **Pelvic/Perineal Reconstruction: Time to Consider the Anterolateral Thigh Flap as a First-line Option?** *Plastic and reconstructive surgery. Global open*  
Perrault, D. n., Kin, C. n., Wan, D. C., Kirilcuk, N. n., Shelton, A. n., Momeni, A. n.  
2020; 8 (4): e2733
- **"It's Like Learning by the Seat of Your Pants": Surgeons Lack Formal Training in Opioid Prescribing.** *Journal of surgical education*

Ayakta, N. n., Sceats, L. A., Merrell, S. B., Kin, C. n.  
2020

- **Elucidating the fundamental fibrotic processes driving abdominal adhesion formation.** *Nature communications*  
Foster, D. S., Marshall, C. D., Gulati, G. S., Chinta, M. S., Nguyen, A. n., Salhotra, A. n., Jones, R. E., Burcham, A. n., Lerbs, T. n., Cui, L. n., King, M. E., Titan, A. L., Ransom, et al  
2020; 11 (1): 4061
- **Use of Biological Medications Does Not Increase Postoperative Complications Among Patients With Ulcerative Colitis Undergoing Colectomy: A Retrospective Cohort Analysis of Privately Insured Patients.** *Diseases of the colon and rectum*  
Rumer, K. K., Dehghan, M. S., Sceats, L. A., Trickey, A. W., Morris, A. M., Kin, C. n.  
2020; 63 (11): 1524–33
- **Diet Quality at the Initiation of Treatment for Metastatic Colorectal Cancer.** *JAMA network open*  
Kin, C. n.  
2020; 3 (10): e2023718
- **Comparative Incidence of Inflammatory Bowel Disease in Different Age Groups in the United States** *INFLAMMATORY BOWEL DISEASES*  
Keyashian, K., Dehghan, M., Sceats, L., Kin, C., Limketkai, B. N., Park, K. T.  
2019; 25 (12): 1983–89
- **Drivers, Beliefs, and Barriers Surrounding Surgical Opioid Prescribing: A Qualitative Study of Surgeons' Opioid Prescribing Habits.** *The Journal of surgical research*  
Sceats, L. A., Ayakta, N., Merrell, S. B., Kin, C.  
2019
- **Oncologic and Perioperative Outcomes of Laparoscopic, Open, and Robotic Approaches for Rectal Cancer Resection: A Multicenter, Propensity Score-Weighted Cohort Study.** *Diseases of the colon and rectum*  
Kethman, W. C., Harris, A. H., Morris, A. M., Shelton, A., Kirilcuk, N., Kin, C.  
2019
- **Surgery, Stomas, and Anxiety and Depression in Inflammatory Bowel Disease: A Retrospective Cohort Analysis of Privately Insured Patients.** *Colorectal disease : the official journal of the Association of Coloproctology of Great Britain and Ireland*  
Sceats, L. A., Dehghan, M. S., Rumer, K. K., Trickey, A., Morris, A. M., Kin, C.  
2019
- **Long-Term Outcomes after Nonoperative Management of Perforated Appendicitis: A Retrospective Cohort Analysis**  
Sceats, L. A., Kin, C. J., Spain, D. A.  
ELSEVIER SCIENCE INC.2019: S157
- **Open vs Laparoscopic vs Robotic Surgery for Rectal Cancer: A Cost-Effectiveness Analysis**  
Chandler, J. M., Conway, A. A., Huckels, J., Pooni, R. K., Zarnett, L. J., Lee, K., Kin, C. J., Salomon, J. A., Owens, D. K.  
ELSEVIER SCIENCE INC.2019: S67
- **Effect of a Multimodal Prehabilitation Program Prior to Colorectal Surgery on Postoperative Pain and Pain Medication Use**  
Lee, A., Shelton, E., Bidwell, S., Shelton, A., Gurland, B., Morris, A. M., Kin, C. J.  
ELSEVIER SCIENCE INC.2019: S58–S59
- **Surgical Decision-Making for Rectal Prolapse: One Size Does Not Fit All.** *Postgraduate medicine*  
Lee, A., Kin, C., Syan, R., Morris, A., Gurland, B.  
2019
- **Fragility of Life: Recurrent Intestinal Perforation Due to Vascular Ehlers-Danlos Syndrome** *DIGESTIVE DISEASES AND SCIENCES*  
Sceats, L. A., Sukerkar, P. A., Raghavan, S. S., Shandiz, A., Shelton, A., Kin, C.  
2019; 64 (8): 2120–23
- **Questioning the Higher Abscess Rate and Overall Cost of Care Associated With Nonoperative Management of Uncomplicated Acute Appendicitis Reply** *JAMA SURGERY*  
Sceats, L. A., Kin, C., Staudenmayer, K. L.  
2019; 154 (8): 784–85

- **Trends in the Inclusion of Black and Female Surgeons in Invited Visiting Professorships.** *JAMA surgery*  
Tabata, M. M., Rosenthal, E. L., Arbaugh, C. J., Kin, C., Kim, E., Graham, L. A., Hawn, M. T.  
2019
- **Operative Versus Nonoperative Management of Appendicitis: A Long-Term Cost Effectiveness Analysis.** *MDM policy & practice*  
Sceats, L. A., Ku, S., Coughran, A., Barnes, B., Grimm, E., Muffly, M., Spain, D. A., Kin, C., Owens, D. K., Goldhaber-Fiebert, J. D.  
2019; 4 (2): 2381468319866448
- **TB or Not TB: Crohn's Disease, Peritoneal Tuberculosis, or Both?** *DIGESTIVE DISEASES AND SCIENCES*  
Miller, M., Kim-Nhien Vu, Zemek, A., Shelton, A., Kin, C.  
2019; 64 (6): 1432–35
- **Questioning the Higher Abscess Rate and Overall Cost of Care Associated With Nonoperative Management of Uncomplicated Acute Appendicitis-Reply.** *JAMA surgery*  
Sceats, L. A., Kin, C., Staudenmayer, K. L.  
2019
- **Sex Differences in Treatment Strategies Among Patients With Ulcerative Colitis: A Retrospective Cohort Analysis of Privately Insured Patients** *DISEASES OF THE COLON & RECTUM*  
Sceats, L. A., Morris, A. M., Bundorf, M., Park, K. T., Kin, C.  
2019; 62 (5): 586–94
- **Nonoperative Management of Uncomplicated Appendicitis Among Privately Insured Patients** *JAMA SURGERY*  
Sceats, L. A., Trickey, A. W., Morris, A. M., Kin, C., Staudenmayer, K. L.  
2019; 154 (2): 141–49
- **Effects of Colorectal Surgery Classification on Reported Postoperative Surgical Site Infections.** *The Journal of surgical research*  
Kethman, W. C., Shelton, E. A., Kin, C., Morris, A. M., Shelton, A. A.  
2019; 236: 340–44
- **Patient Decision-Making in Severe Inflammatory Bowel Disease: The Need for Improved Communication of Treatment Options and Preferences.** *Colorectal disease : the official journal of the Association of Coloproctology of Great Britain and Ireland*  
Lai, C. n., Sceats, L. n., Qiu, W. n., Park, K. T., Morris, A. M., Kin, C. n.  
2019
- **Fragility of Life: Recurrent Intestinal Perforation Due to Vascular Ehlers-Danlos Syndrome.** *Digestive diseases and sciences*  
Sceats, L. A., Sukekar, P. A., Raghavan, S. S., Esmaili Shandiz, A. n., Shelton, A. n., Kin, C. n.  
2019
- **Sex Differences in Treatment Strategies Among Patients With Ulcerative Colitis: A Retrospective Cohort Analysis of Privately Insured Patients.** *Diseases of the colon and rectum*  
Sceats, L. A., Morris, A. M., Bundorf, M. K., Park, K. T., Kin, C. n.  
2019
- **Comparative Incidence of Inflammatory Bowel Disease in Different Age Groups in the United States.** *Inflammatory bowel diseases*  
Keyashian, K. n., Dehghan, M. n., Sceats, L. n., Kin, C. n., Limketkai, B. N., Park, K. T.  
2019
- **Shared Decision Making in Appendicitis Treatment: Optimized, Standardized, or Usual Communication.** *JAMA network open*  
Sceats, L. n., Kin, C. n., Morris, A. M.  
2019; 2 (6): e194999
- **Caring for Caregivers - Resident Physician Health and Wellbeing.** *Journal of surgical education*  
Baiu, I. n., Titan, A. n., Kin, C. n., Spain, D. A.  
2019
- **Nonoperative Management of Uncomplicated Appendicitis Among Privately Insured Patients.** *JAMA surgery*  
Sceats, L. A., Trickey, A. W., Morris, A. M., Kin, C., Staudenmayer, K. L.  
2018

- **Female trainees believe that having children will negatively impact their careers: results of a quantitative survey of trainees at an academic medical center.** *BMC medical education*  
Kin, C., Yang, R., Desai, P., Mueller, C., Girod, S.  
2018; 18 (1): 260
- **So Now My Patient Has Squamous Cell Cancer: Diagnosis, Staging, and Treatment of Squamous Cell Carcinoma of the Anal Canal and Anal Margin.** *Clinics in colon and rectal surgery*  
Kin, C.  
2018; 31 (6): 353–60
- **TB or Not TB: Crohn's Disease, Peritoneal Tuberculosis, or Both?** *Digestive diseases and sciences*  
Miller, M., Vu, K., Zemek, A., Shelton, A., Kin, C.  
2018
- **Operative vs Nonoperative Management of Appendicitis: A Long-Term Cost-Effectiveness Analysis**  
Sceats, L. A., Coughran, A., Barnes, B., Grimm, E. L., Muffly, M., Spain, D. A., Kin, C. J., Owens, D. K., Fiebert, J.  
ELSEVIER SCIENCE INC.2018: S157–S158
- **Coordination of Care in Colorectal Cancer Patients: A Population-Based Study**  
Miller, M. O., Trickey, A. W., Kin, C. J., Hawley, S. T., Abrahamse, P., Morris, A. M.  
ELSEVIER SCIENCE INC.2018: S141–S142
- **Should Surgery Feel Like the Last Resort? Drivers of Decision Making in Inflammatory Bowel Disease**  
Lai, C., Sceats, L. A., Qiu, W., Park, K. T., Morris, A. M., Kin, C. J.  
ELSEVIER SCIENCE INC.2018: S163–S164
- **Nonoperative Management of Appendicitis in Privately Insured Patients**  
Sceats, L. A., Trickey, A. W., Morris, A. M., Kin, C. J., Staudenmayer, K. D.  
ELSEVIER SCIENCE INC.2018: S156–S157
- **Depression and Healthcare Utilization in Patients with Inflammatory Bowel Disease.** *Journal of Crohn's & colitis*  
Wong, J. J., Sceats, L., Dehghan, M., Wren, A. A., Sellers, Z. M., Limketkai, B. N., Bensen, R., Kin, C., Park, K. T.  
2018
- **Perianal Extramammary Paget's Disease: More Than Meets the Eye.** *Digestive diseases and sciences*  
Choi, J. n., Zemek, A. n., Lee, G. K., Kin, C. n.  
2018
- **Frequency and Timing of Short-Term Complications Following Abdominoperineal Resection** *Journal of Surgical Research*  
Tooley, J. E., Sceats, L. A., Bohl, D. D., Read, B., Kin, C.  
2018; 231: 69-76
- **Frequency and timing of short-term complications following abdominoperineal resection.** *The Journal of surgical research*  
Tooley, J. E., Sceats, L. A., Bohl, D. D., Read, B. n., Kin, C. n.  
2018; 231: 69–76
- **Starting Young: Trends in Opioid Therapy Among US Adolescents and Young Adults With Inflammatory Bowel Disease in the Truven MarketScan Database Between 2007 and 2015.** *Inflammatory bowel diseases*  
Wren, A. A., Bensen, R. n., Sceats, L. n., Dehghan, M. n., Yu, H. n., Wong, J. J., Maclsaac, D. n., Sellers, Z. M., Kin, C. n., Park, K. T.  
2018
- **Nationwide Trends in Acute and Chronic Pancreatitis Among Privately Insured Children and Non-Elderly Adults in the United States, 2007-2014.** *Gastroenterology*  
Sellers, Z. M., Maclsaac, D. n., Yu, H. n., Dehghan, M. n., Zhang, K. Y., Bensen, R. n., Wong, J. J., Kin, C. n., Park, K. T.  
2018
- **As Infliximab Use for Ulcerative Colitis Has Increased, so Has the Rate of Surgical Resection.** *Journal of gastrointestinal surgery*  
Kin, C., Kate Bundorf, M.  
2017

- **Black Is the New Black: Prolapsing Primary Anorectal Melanoma.** *Digestive diseases and sciences*  
Jensen, C., Kin, C.  
2017
- **Surgery for diverticulitis in the 21st century: recent evidence.** *Minerva gastroenterologica e dietologica*  
Morris, A. M., Kin, C.  
2017
- **Say What? Bannayan-Riley-Ruvalcaba Syndrome Presenting with Gastrointestinal Bleeding Due to Hamartoma-Induced Intussusception.** *Digestive diseases and sciences*  
Kethman, W., Rao, A., Devereaux, K., Ouellet, E., Kin, C.  
2017
- **Deep Immune Profiling of an Arginine-Enriched Nutritional Intervention in Patients Undergoing Surgery.** *Journal of immunology (Baltimore, Md. : 1950)*  
Aghaepour, N. n., Kin, C. n., Ganio, E. A., Jensen, K. P., Gaudilliere, D. K., Tingle, M. n., Tsai, A. n., Lancero, H. L., Choisy, B. n., McNeil, L. S., Okada, R. n., Shelton, A. A., Nolan, et al  
2017
- **Gender disparities in scholarly productivity of US academic surgeons** *JOURNAL OF SURGICAL RESEARCH*  
Mueller, C. M., Gaudilliere, D. K., Kin, C., Menorca, R., Girod, S.  
2016; 203 (1): 28-33
- **Complex and Reoperative Colorectal Surgery.** *Clinics in colon and rectal surgery*  
Kin, C.  
2016; 29 (2): 73-4
- **Complex and Reoperative Colorectal Surgery: Setting Expectations and Learning from Experience** *CLINICS IN COLON AND RECTAL SURGERY*  
Kin, C.  
2016; 29 (2): 75-79
- **Double Rarities, Double Challenges: Extra-Mammary Paget's Disease and Anal Adenocarcinoma.** *Digestive diseases and sciences*  
Gholami, S., Wood, L. S., Bingham, D., Kin, C.  
2016; 61 (4): 996-999
- **Double Rarities, Double Challenges: Extra-Mammary Paget's Disease and Anal Adenocarcinoma** *DIGESTIVE DISEASES AND SCIENCES*  
Gholami, S., Wood, L. S., Bingham, D., Kin, C.  
2016; 61 (4): 996-999
- **Equivocal Effect of Intraoperative Fluorescence Angiography on Colorectal Anastomotic Leaks** *DISEASES OF THE COLON & RECTUM*  
Kin, C., Vo, H., Welton, L., Welton, M.  
2015; 58 (6): 582-587
- **The Prognostic Significance of Pretreatment Hematologic Parameters in Patients Undergoing Resection for Colorectal Cancer.** *American journal of clinical oncology*  
Kozak, M. M., von Eyben, R., Pai, J. S., Anderson, E. M., Welton, M. L., Shelton, A. A., Kin, C., Koong, A. C., Chang, D. T.  
2015: -?
- **Study shows insufficient decrease in wound complications with sutured versus stapled skin closure in gastrointestinal operations.** *Evidence-based medicine*  
Vo, H., Kin, C.  
2014; 19 (3): 100-?
- **Perioperative Outcomes of Major Noncardiac Surgery in Adults with Congenital Heart Disease** *ANESTHESIOLOGY*  
Maxwell, B. G., Wong, J. K., Kin, C., Lobato, R. L.  
2013; 119 (4): 762-769
- **Perioperative outcomes of major noncardiac surgery in adults with congenital heart disease.** *Anesthesiology*  
Maxwell, B. G., Wong, J. K., Kin, C., Lobato, R. L.

2013; 119 (4): 762-769

- **Colorectal cancer diagnostics: biomarkers, cell-free DNA, circulating tumor cells and defining heterogeneous populations by single-cell analysis.** *Expert review of molecular diagnostics*  
Kin, C., Kidess, E., Poultsides, G. A., Visser, B. C., Jeffrey, S. S.  
2013; 13 (6): 581-599
- **Predictors of postoperative urinary retention after colorectal surgery.** *Diseases of the colon & rectum*  
Kin, C., Rhoads, K. F., Jalali, M., Shelton, A. A., Welton, M. L.  
2013; 56 (6): 738-746
- **Accidental Puncture or Laceration in Colorectal Surgery: A Quality Indicator or a Complexity Measure?** *Meeting of the American-Society-of-Colon-and-Rectal-Surgeons (ASCRS)*  
Kin, C., Snyder, K., Kiran, R. P., Remzi, F. H., Vogel, J. D.  
LIPPINCOTT WILLIAMS & WILKINS.2013: 219-25
- **Assessment of the Clinical Usefulness of Imaging Modalities in Identifying Postoperative Upper Gastrointestinal Tract Leaks Requiring Reoperation** *SURGICAL LAPAROSCOPY ENDOSCOPY & PERCUTANEOUS TECHNIQUES*  
Khoury, W., Kin, C., Ben Yehuda, A., Weinbroum, A. A.  
2012; 22 (4): 328-332
- **The impact of hepatic portoenterostomy on liver transplantation for the treatment of biliary atresia: Early failure adversely affects outcome** *PEDIATRIC TRANSPLANTATION*  
Alexopoulos, S. P., Merrill, M., Kin, C., Matsuoka, L., Dorey, F., Concepcion, W., Esquivel, C., Bonham, A.  
2012; 16 (4): 373-378
- **Utility of liver allograft biopsy obtained at procurement** *LIVER TRANSPLANTATION*  
Lo, I. J., Lelkowitz, J. H., Feirt, N., Alkofer, B., Kin, C., Samstein, B., Guarrera, J. V., Renz, J. F.  
2008; 14 (5): 639-646
- **Extended-donor criteria liver allografts** *SEMINARS IN LIVER DISEASE*  
Alkofer, B., Samstein, B., Guarrera, J. V., Kin, C., Jan, D., Bellemare, S., Kinkhabwala, M., Brown, R., Emond, J. C., Renz, J. F.  
2006; 26 (3): 221-233
- **Utilization of extended donor criteria liver allografts maximizes donor use and patient access to liver transplantation** *125th Annual Meeting of the American-Surgical-Association*  
Renz, J. F., Kin, C., Kinkhabwala, M., Jan, D., Varadarajan, R., Goldstein, M., Brown, R., Emond, J. C.  
LIPPINCOTT WILLIAMS & WILKINS.2005: 556-65