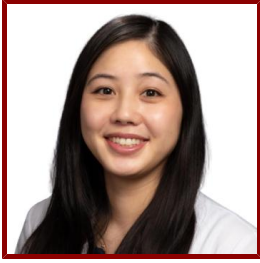


Stanford



Christina F Lin

Instructor, Medicine - Gastroenterology & Hepatology

CLINICAL OFFICE (PRIMARY)

- **Stanford Gastroenterology and Liver Transplant**

500 Pasteur Dr

Stanford, CA 94304

Tel (650) 497-1437

Fax (650) 723-9178

Bio

CLINICAL FOCUS

- Internal Medicine

ACADEMIC APPOINTMENTS

- Instructor, Medicine - Gastroenterology & Hepatology

PROFESSIONAL EDUCATION

- Board Certification: Internal Medicine, American Board of Internal Medicine (2023)
- Residency: Kaiser Permanente Santa Clara Internal Medicine Residency (2023) CA
- Medical Education: Rush Medical College (2020) IL

Publications

PUBLICATIONS

- **Serum gastrin levels are associated with prevalent neuroendocrine tumors in autoimmune metaplastic atrophic gastritis.** *The American journal of gastroenterology*
Jove, A., Lin, C., Hwang, J. H., Vidhya, B., Fernandez-Becker, N. Q., Huang, R. J.
2024
- **Serologic Features of Autoimmune Metaplastic Atrophic Gastritis: Gastrin Level as a Predictor of Gastric Neuroendocrine Tumor Status**
Jove, A. G., Lin, C., Hwang, J., Balasubramanian, V., Fernandez-Becker, N., Huang, R.
LIPPINCOTT WILLIAMS & WILKINS.2024: S1643-S1644
- **Risk of Gastric and Small Intestinal Cancer in Patients With Lynch syndrome - Data From a Large, Community-Based U.S. Population.** *Clinical and translational gastroenterology*
Lin, C. F., Carwana, H. E., Jiang, S. F., Li, D.
2024
- **CLINICAL AND SEROLOGIC FEATURES OF AUTOIMMUNE METAPLASTIC ATROPHIC GASTRITIS: RESULTS OF AN ELECTRONIC HEALTH RECORDS COHORT**
Jove, A., Lin, C., Hwang, J., Fernandez-Becker, N., Huang, R.
MOSBY-ELSEVIER.2024: AB1095-AB1096