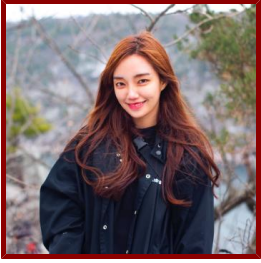


Stanford



Ji-In Jung

Postdoctoral Scholar, Geophysics

Bio

HONORS AND AWARDS

- NASA FINESST Fellow, NASA (2021)
- Korean Government Scholarship Program for Study Overseas, Natural Science Division (2018)

STANFORD ADVISORS

- Sonia Tikoo, Postdoctoral Faculty Sponsor

LINKS

- <https://magnetism.stanford.edu>: <https://magnetism.stanford.edu>
- <https://jiinjung.io>: <https://jiinjung.io>

Publications

PUBLICATIONS

- **Remote Compositional Analyses of Space-weathered Lunar Maria** *PLANETARY SCIENCE JOURNAL*
Jung, J., Lapotre, M. G. A., Milliken, R. E., Minson, S. E.
2026; 7 (1)
- **Universal reconstruction of complex magnetic profiles with minimal prior assumptions** *PHYSICAL REVIEW APPLIED*
Yao, C., Yu, Y., Shi, Y., Jung, J., Vaci, Z., Wang, Y., Liu, Z., Zhang, C., Tikoo-Schantz, S., Zu, C.
2025; 24 (6)
- **Magnetic Mineralogy in Lunar Mare Basalts and Implications for Paleointensity Retrieval** *JOURNAL OF GEOPHYSICAL RESEARCH-PLANETS*
Jung, J., Tikoo, S. M., Vaci, Z., Krawczynski, M. J., Solheid, P., Burns, D. H., Vailionis, A.
2025; 130 (9)
- **Assessing lunar paleointensity variability during the 3.9-3.5 Ga high field epoch** *EARTH AND PLANETARY SCIENCE LETTERS*
Jung, J., Tikoo, S. M., Burns, D., Vaci, Z., Krawczynski, M. J.
2024; 638
- **Establishing a Lunar Origin for Paleomagnetic Records in Apollo Samples** *GEOPHYSICAL RESEARCH LETTERS*
Tikoo, S. M., Jung, J.
2023; 50 (19)
- **Significance of Secondary Fe-Oxide and Fe-Sulfide Minerals in Upper Peak Ring Suevite from the Chicxulub Impact Structure** *MINERALS*
Verhagen, C. M., Jung, J., Tikoo, S. M., Wittmann, A., Kring, D. A., Brachfeld, S., Wu, L., Burns, D. H., Gulick, S. P. S.
2023; 13 (3)

- **A Feasibility Study of Microbialites as Paleomagnetic Recorders** *FRONTIERS IN EARTH SCIENCE*
Jung, J., Bowles, J. A.
2021; 9